

# **SCAPE**

**GRESHAM SMITH  
BIOHABITATS  
NEW SOUTH ASSOCIATES  
DR. NA'TAKI OSBORNE JELKS  
DR. RICHARD MILLIGAN  
EDWARDS-PITMAN**

# **DEMONSTRATION SITES: METHODOLOGY & SELECTION CRITERIA**

**CHATAHOOCHEE RIVERLANDS GREENWAY STUDY**

**SUBMITTED ON 10/25/2019**





*The Chattahoochee River Greenway Study (Chattahoochee RiverLands) is being managed by a joint Project Management Team (PMT) consisting of the Atlanta Regional Commission (ARC), the Trust for Public Land, Cobb County, and the City of Atlanta. The project is being designed in collaboration with the Chattahoochee Working Group (CWG), a collection of stakeholders, residents, and political officials working within the study area.*

*SCAPE Landscape Architecture is leading a collaborative Design Team composed of nationally and locally renowned experts in the fields of Landscape Architecture & Urban Design (SCAPE), Transportation, Multi-Modal Trail Design and Network Planning (Gresham Smith), Ecological Design & Planning (Biohabitats), Anthropology & History (New South Associates), Environmental Justice (Dr. Na'Taki Osborne Jelks), and Geography (Dr. Richard Milligan).*

DOCUMENT PREPARED FOR:



LEARN MORE ABOUT THE PROJECT AT:

**[WWW.CHATTAHOOCHEERIVERLANDS.COM](http://WWW.CHATTAHOOCHEERIVERLANDS.COM)**

# TABLE OF CONTENTS

- 01. METHODOLOGY & SELECTION CRITERIA** **5**
- ABOUT THE CHATTAHOOCHEE RIVERLANDS DEMONSTRATION SITES .....6
- PURPOSE OF THE DOCUMENT .....7
- POTENTIAL DEMONSTRATION SITES .....8
- METHODOLOGY & SELECTION CRITERIA .....9
- FEEDBACK ON DEMONSTRATION SITES .....10
  
- 02. DEMONSTRATION SITES WORKSHEETS** **13**
- DISTRIBUTION OF POTENTIAL SITES.....14
- SUGAR HILL TRAILHEAD .....16
- RC AKERS .....18
- PEACHTREE INDUSTRIAL BLVD .....20
- PADDLE CAMP AT JONES BRIDGE UNIT .....22
- PADDLE CAMP AT GOLD BRANCH UNIT .....24
- TRAILHEAD AT BIG CREEK .....26
- STANDING PEACHTREE PARK .....28
- McDONOUGH-ATKINSON BROWNFIELD .....30
- ATLANTA RIVERLANDS PARK .....32
- PROCTOR CREEK TRAIL EXTENSION .....34
- FULTON COUNTY CHARLIE BROWN AIRPORT .....36
- MABLETON PARKWAY TRAILHEAD .....38
- FULTON INDUSTRIAL RIVER TRAIL.....40
- FULTON RIVERLANDS PARK .....42
- CHATTAHOOCHEE HILLS RIVERLANDS PARK .....44
- MOORE’S BRIDGE PARK.....46
- McINTOSH CROSSING .....48
- SUGGEST YOUR OWN SITE .....50
- SUGGEST YOUR OWN SITE .....52



# **01. METHODOLOGY & SELECTION CRITERIA**

# ABOUT THE CHATTAHOOCHEE RIVERLANDS DEMONSTRATION SITES

As the RiverLands team and stakeholders move closer to a preferred trail alignment, we are beginning to visualize what the RiverLands will actually look like. It can be hard to imagine a 100-mile greenway trail and even harder to anticipate the transformative potential of such a huge project. To help put the greenway in context, a piece of the final Study will be an exploration of several demonstration sites. For these specific locations, the Design Team will provide a conceptual design in order to better understand, illustrate, and explain how the greenway and its associated programs will fit into our regional landscape and communities.

Based on Project Team conversations (both internal and external) over the course of the Study, we have identified numerous potential Demonstration Sites. Due to time and resource constraints, we will only be able to select three sites for more detailed study. In order to choose the Demonstration Sites, the team has developed an evaluation criterion based on how well each site supports the RiverLands' four project goals: to create a Safe, Connective Corridor; establish an Ecological Refuge; ensure a Common Ground for All; and provide a Living Legacy for the region.

Within each of these broad goals, we need your help determining which sites best demonstrate the Study's challenges and opportunities. The following pages include specific questions to help determine whether (or to what degree) each site can: Accommodate multi-modal use? Provide universal access to the River? Connect to existing regional trails? Enhance ecological connectivity? Make new public space where it is lacking? Generate economic development/create jobs? Build on existing local grassroots efforts? Avoid sensitive historical resources? And be a model for other sites? These questions may be subjective, but a sampling of numerous local points of input on each site will help us choose key sites to explore.

So once again, we need your feedback! The Demonstration Sites are meant to be places where the RiverLands will become tangible and will establish models for the greenway development while showing the full breadth of our Study's vision. In this phase, we can truly begin re-imagining Metro Atlanta's relationship to the Chattahoochee River. Please spend some time with these pages and help us select these important pieces of the plan.

Byron Rushing  
Bicycling & Walking Program Manager  
Atlanta Regional Commission

# PURPOSE OF THE DOCUMENT

## ROLE OF DEMONSTRATION SITES

The demonstration sites should act as key destinations that bring people not only to the River's edge but allow them to understand the identity of the RiverLands. Three demonstration sites will be selected for conceptual level designs in Task 5. These sites should reveal the potential of the Chattahoochee RiverLands vision established in Task 3 and represent typical conditions throughout the 100-mile corridor. The three demonstration sites should have clear next steps for implementation and build upon ongoing initiatives and funding sources.

## GEOGRAPHIC DISTRIBUTION

The selected demonstration sites should be distributed evenly between the three sub-areas and act as examples for how to respond to typical conditions within the northern Suburban Parklands, central Urban Core of Atlanta and Cobb County, and the southern Agricultural Countryside.

## LEVEL OF DESIGN

The demonstration sites will be designed through collaboration with the Chattahoochee Working Group, Sub-Area Committees, and public input. The sites will be drawn to the conceptual level of design - suggesting programmatic overlays and key design elements of the RiverLands - greenways, blueways, and tributary trails.

## HOW TO GIVE FEEDBACK

The Design Team invites you to take a close look at this document, and provide feedback by filling out the worksheets in preparation for the December 4<sup>th</sup>, Chattahoochee Working Group meeting.

Please note any potential demonstration sites that you think would be worth considering that are not included in the seventeen listed in this document. Feedback from the Chattahoochee Working Group will be used to inform the selection of three demonstration sites.

**Please email us a digital scan or photos of your worksheets at: [info@chattahoocheeriverlands.com](mailto:info@chattahoocheeriverlands.com) by November 27, 2019.**

## WHAT'S NEXT

The Greenway Plan Development (Task 4) of the Chattahoochee RiverLands Greenway Study is underway from August to December of 2019. The primary goal of Task 4 is to generate one preferred alignment for the 100-mile corridor and to develop a methodology and criteria for selecting three demonstration sites. The design for the three selected sites will be advanced and developed in the first quarter of 2020.

Once your feedback has been reviewed, three demonstration sites will be selected before kicking off Task 5: Implementation Strategies in January of 2020. In Task 5, the project team will develop an implementation strategy.



# POTENTIAL DEMONSTRATION SITES

## 1. SUGAR HILL TRAILHEAD

Location: Sugar Hill, Gwinnett County, Sub-Area 1

Description: The trailhead would be the northernmost entrance to the RiverLands for cyclists.

## 2. RC AKERS

Location: Cumming, Forsyth County, Sub-Area 1

Description: Small new RiverLands park along the river.

## 3. PEACHTREE INDUSTRIAL BOULEVARD

Location: Duluth, Gwinnett County, Sub-Area 1

Description: Existing expressway, could become a model mile.

## 4. PADDLE CAMP AT JONES BRIDGE UNIT

Location: Jones Bridge Unit, Fulton County, Sub-Area 1

Description: Overnight campsite within existing national recreation area.

## 5. PADDLE CAMP AT GOLD BRANCH UNIT

Location: Gold Branch Unit, Cobb County, Sub-Area 1

Description: Overnight campsite within existing national recreation area.

## 6. TRAILHEAD AT BIG CREEK

Location: Roswell, Fulton County, Sub-Area 1

Description: Connect Vickery Creek National recreation area to Chattahoochee River and existing city parks along Big Creek.

## 7. STANDING PEACHTREE PARK

Location: Atlanta, Fulton County, Sub-Area 1-2

Description: Develop a plan to develop public access and amenities at existing park.

## 8. McDONOUGH-ATKINSON BROWNFIELD

Location: Atlanta, Cobb County, Sub-Area 2

Description: Opportunity to restore polluted coal ash pits and create new public space.

## 9. ATLANTA RIVERLANDS PARK

Location: Atlanta, Fulton County, Sub-Area 2

Description: Opportunity to create park extending to the River on top of tall capped landfill in Atlanta.

## 10. PROCTOR CREEK TRAIL EXTENSION

Location: Atlanta, Fulton County, Sub-Area 2

Description: Explore opportunities for park and stronger connectivity where Proctor Creek flows into the Chattahoochee River.

## 11. FULTON CHARLIE BROWN AIRPORT

Location: Atlanta, Fulton County, Sub-Area 2

Description: Utilize and improve existing maintenance pathway for linear park along river.

## 12. MABLETON PARKWAY TRAILHEAD

Location: Mableton, Cobb County, Sub-Area 2

Description: ADA accessible access to the river and pilot site. Could include, park space, comfort station, boat ramp, amenities, etc.

## 13. FULTON INDUSTRIAL RIVER TRAIL

Location: Atlanta, Fulton County, Sub-Area 2

Description: Restoration and stormwater management opportunities for riparian zone with pedestrian and bike access along the river.

## 14. FULTON RIVERLANDS PARK

Location: Fulton Industrial, Fulton County, Sub-Area 3

Description: New signature park with river access across from Sweetwater Creek State Park, upstream from ONR boat ramp at Highway 154.

## 15. CHATTAHOOCHEE HILLS RIVERLANDS PARK

Location: Campbellton Road, Chattahoochee Hills, Fulton County, Sub-Area 3

Description: New large park with river access in Chattahoochee Hills.

## 16. MOORE'S BRIDGE PARK

Location: Whitesburg, Carroll County, Sub-Area 3

Description: Reveal and interpret historic bridge. Improve and enhance park and river access.

## 17. McINTOSH CROSSING

Location: between McIntosh Reserve and Chatt. Bend State Park, Coweta County & Carroll County, Sub-Area 3

Description: New bike and pedestrian crossing between McIntosh Reserve Park and Chatt. Bend State Park

*Note: Numbering is based on location from North to South. Does not imply hierarchy.*



# METHODOLOGY & SELECTION CRITERIA

In order to evaluate all the potential demonstration sites, the Design Team turned to the project goal and design strategies established in Task3. Each potential demonstration site should either currently exhibit or have the potential to meet these criteria for each project goal:

## SAFE, CONNECTIVE CORRIDOR

- Does it have a multi-modal component?
- Does it connect communities?
- Does it connect to public transportation?
- Does it increase water access?
- Is it accessible to all people?

## COMMON GROUND FOR ALL

- Is the site inviting to all? Does it have the potential to be a destination?
- Does it serve underserved communities?
- Is it supported by local communities?
- Is there potential for displacement for adjacent communities, and if so, could it be addressed/mitigated within the site boundary? (ie affordable housing, etc.)
- Does it connect communities to new public space?
- Does it have the potential for economic development and jobs creation?
- Does it have opportunity for remediation or restoration? (+addressing env justice issues?)

## ECOLOGICAL REFUGE FOR THE REGION

- Does it enhance eco-connectivity?
- Does it improve ecological health?
- Does it improve water quality/promote tributary health?
- Does it invite access + improve ecological quality? (access but not at expense of conservation – balance)
- Does it improve habitat restoration?
- Does it promote tributary health?
- Does it align to MRPA?

## LIVING LEGACY FOR FUTURE GENERATIONS

- Does it anticipate growth?
- Does it have the potential to interpret social and ecological history and hold points of interest? Is it a significant historical and ecological site?
- Does it have the potential to establish an identity for the RiverLands?
- Does it have potential to be transformative?
- Is it implementable? (ownership, politics)
- Does it align with partners and funding mechanisms?
- Does it allow for stewardship?

# FEEDBACK ON DEMONSTRATION SITES

## HOW TO GIVE FEEDBACK


The Design Team invites you to take a close look at the Demonstration Sites Methodology & Selection Criteria document and provide feedback:

- Fill out the worksheets on each Demonstration Site in 02. Demonstration Sites
- Bring a hard copy of your packet to the December 4<sup>th</sup> Chattahoochee Working Group meeting
- Send a digital scan or photos to info@chattahoocheeriverlands.com by Wednesday, November 27<sup>th</sup>, 2019.

Reference the marked up example of worksheet for Peachtree Industrial Boulevard on the facing page when thinking about what format to use for your contributions. Thank you!


FRONT

### PEACHTREE INDUSTRIAL BLVD



**SITE FACTS**

Location: Duluth, Gwinnett County  
 Map file: 103  
 Sub-Area: 1  
 Size: 1 mile  
 Ownership: Right-of-way  
 Description: Existing expressway, could become a model mile.



**SCORE CARD**

Can this site fulfill the four design goals? Rate each goal on a scale of 1 to 5:  
 1 = Not possible / 2 = Probably not possible / 3 = Maybe possible  
 4 = Most likely possible / 5 = Definitely possible!

**CAN THIS SITE ...**

Category	Goal	Score
Safe, Connective Corridor	accommodate multi-modal use?	4
	connect to public transit?	2
	include universal access to the River?	1
	connect to existing regional trails?	5
Ecological Refuge for the Region	safely connect communities to the River?	3
	enhance ecological connectivity?	4
	include tributary restoration?	3
	include restoration potential?	3
Common Ground for All	intersect a MRPA category E or F zone?	1
	balance access to an eco-sensitive area?	1
	make new public space where it is lacking?	4
	demonstrate anti-displacement strategies?	2
Living Legacy	host stewardship/educational opportunities?	2
	generate economic development/create jobs?	2
	build on existing local grassroots efforts?	2
	cross a significant historical site?	1
Living Legacy	avoid sensitive historical resources?	4
	connect to an area suitable for growth?	5
	be implemented in the near future?	5
Living Legacy	be a model for other sites?	5

BACK

**TELL US MORE ABOUT THIS SITE ...**

**PROS**

- Expressway in need of innovation
- Increase walkability / bikeability of Env. Justice Target Area
- Visible to many users, gets lots of traffic
- Connects to Gwinnett Bypass

- lots of traffic
- not visible
- doesn't to

**ADDITIONAL COMMENTS**

*Can the tributary path be included in this model mile? That would help demonstrate how this is a RiverLand's project and not just a Gwinnett County project.*

**DO YOU THINK THIS SITE SHOULD BE A DEMONSTRATION SITE?**  
(mark one)

○

○

○

○

○

●

Strongly Disagree
Neutral
Strongly Agree

Name: *Sophie Riedel* Organization: *SCAPE*

Chattahoochee RiverLands 15

10



CONNECTIONS  
+ ACCESS POINTS

ECOLOGY

like Cavley  
Creek, Jones  
Long Indian  
Creek

Balance

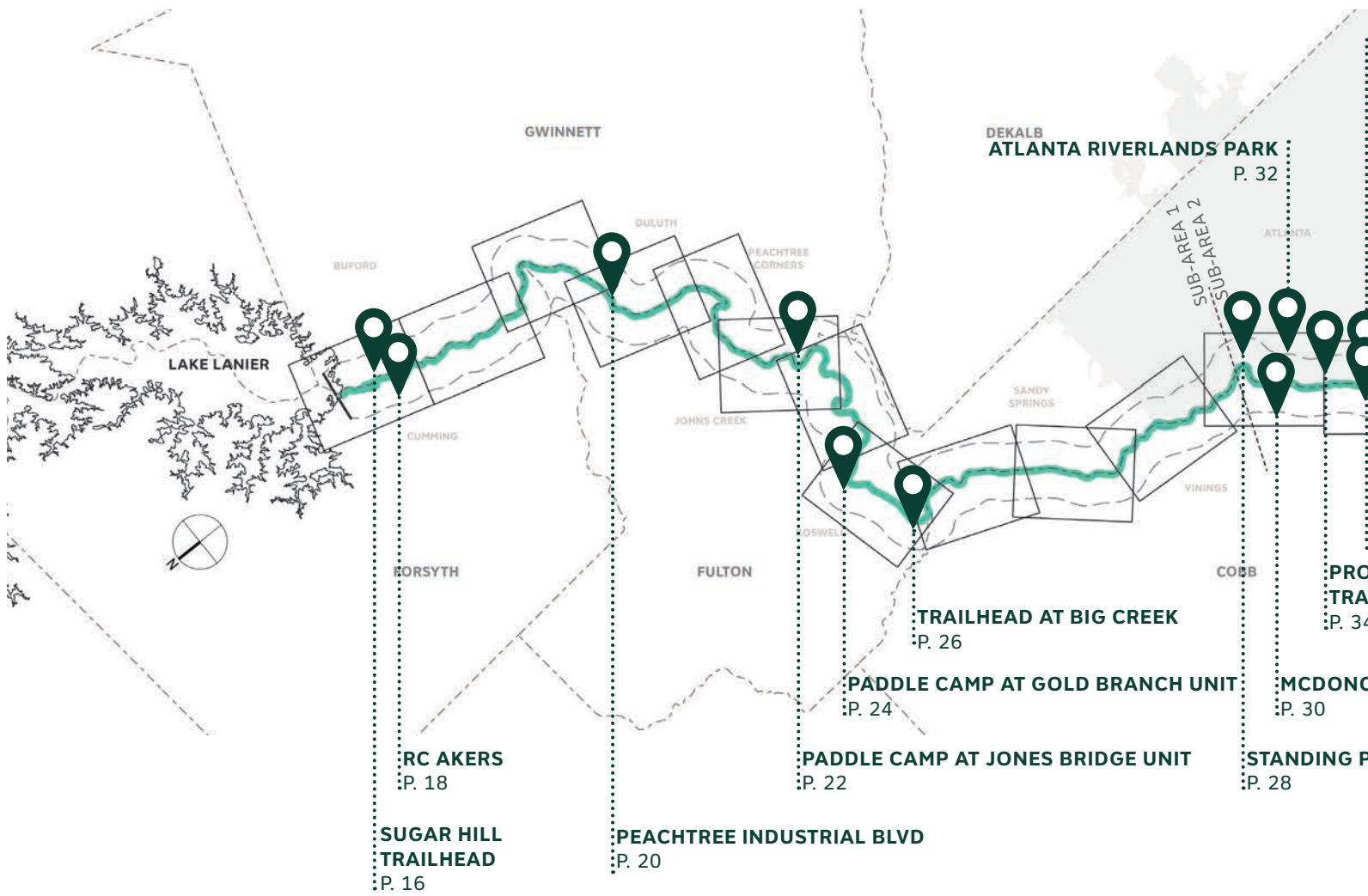
Innes Bridge -  
crossing

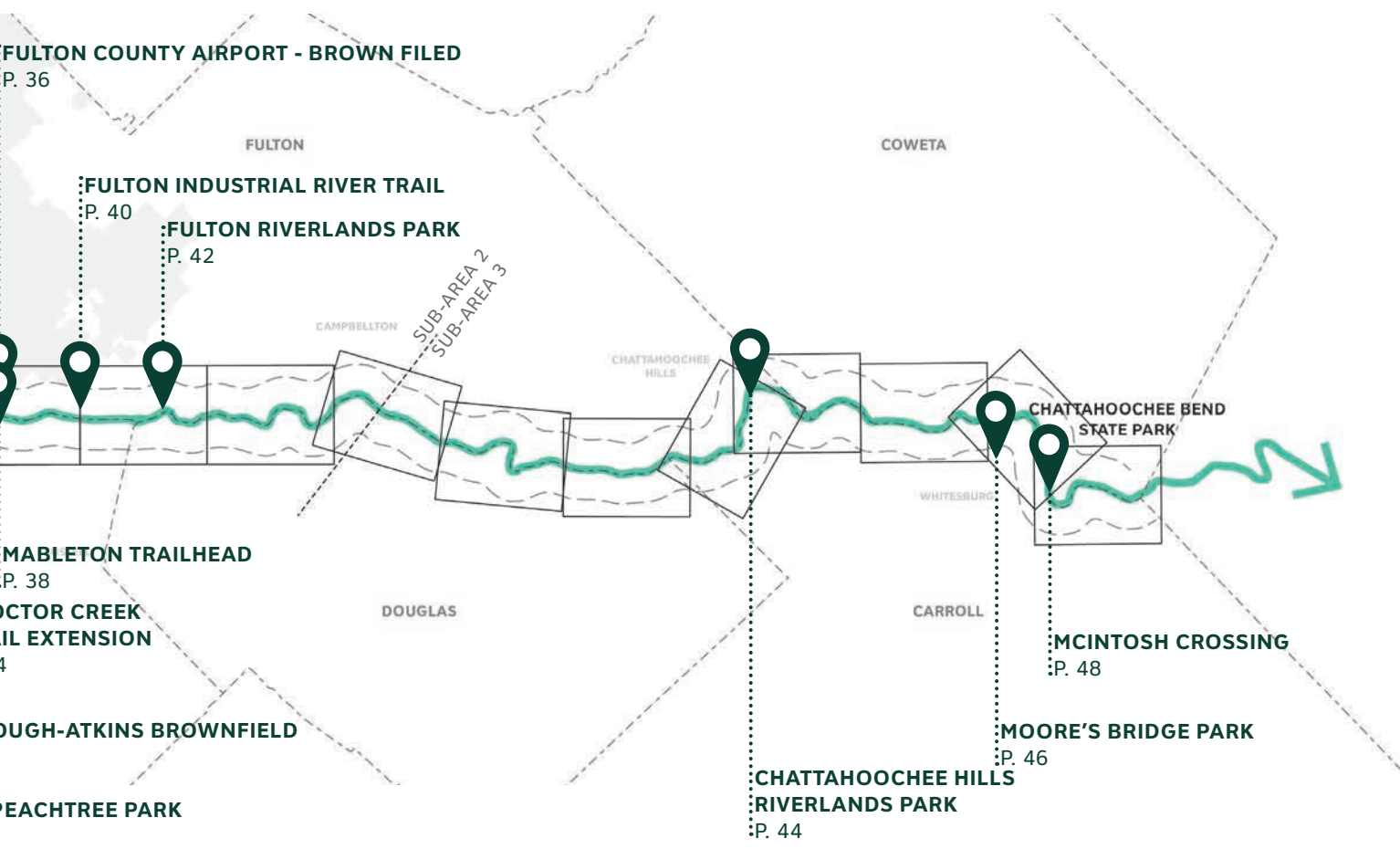




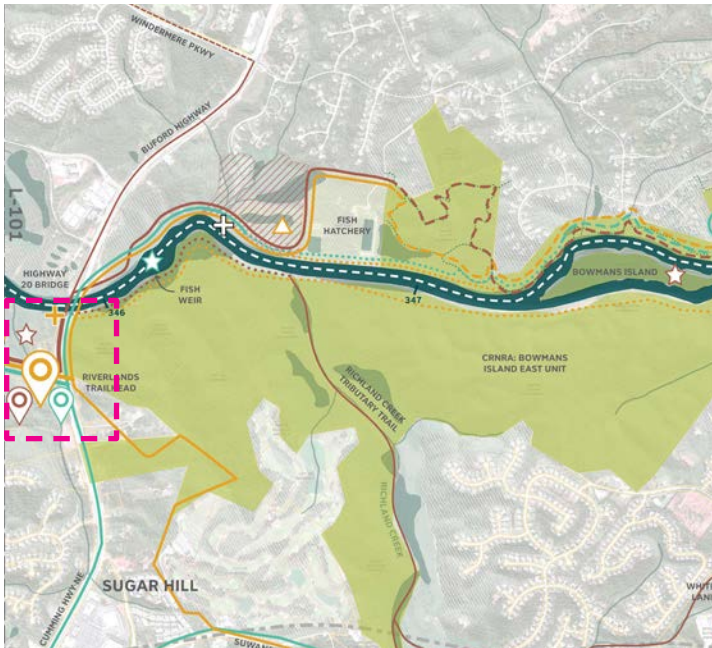
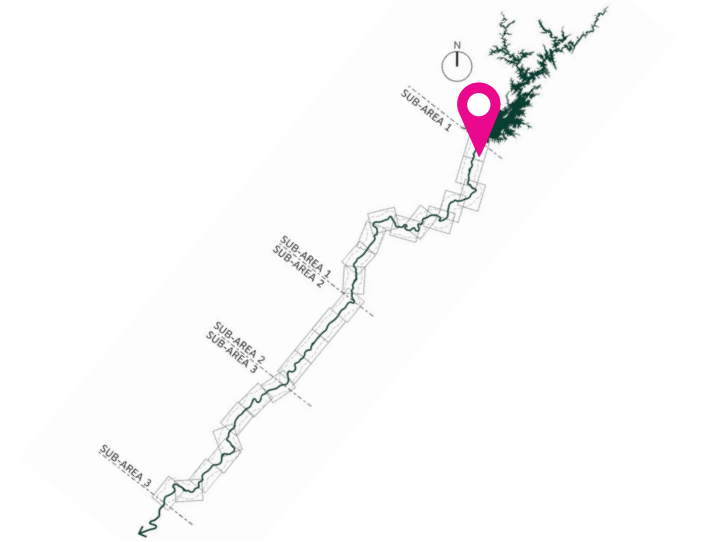
# **02. DEMONSTRATION SITES WORKSHEETS**

# DISTRIBUTION OF POTENTIAL SITES





# SUGAR HILL TRAILHEAD



## SITE FACTS

Location: **Sugar Hill, Gwinnett County**

Map tile: **L-100**

Sub-Area: **1**

Size: **3 acres**

Ownership: **Gwinnett County**

Description: **The trailhead would be the northernmost entrance to the RiverLands for cyclists.**

## SCORE CARD

Can this site fulfill the four design goals? Rate each goal on a scale of 1 to 5:

**1** = Not possible / **2** = Probably not possible / **3** = Maybe possible  
**4** = Most likely possible / **5** = Definitely possible!

### CAN THIS SITE ...

		Score
<b>Safe, Connective Corridor</b>	accommodate multi-modal use? .....	<input type="text"/>
	connect to public transit? .....	<input type="text"/>
	include universal access to the River? .....	<input type="text"/>
	connect to existing regional trails? .....	<input type="text"/>
	safely connect communities to the River? .....	<input type="text"/>
<b>Ecological Refuge for the Region</b>	enhance ecological connectivity? .....	<input type="text"/>
	include tributary restoration? .....	<input type="text"/>
	include restoration potential? .....	<input type="text"/>
	intersect a MRPA category E or F zone? .....	<input type="text"/>
	balance access to an eco-sensitive area? .....	<input type="text"/>
<b>Common Ground for All</b>	make new public space where it is lacking? ...	<input type="text"/>
	demonstrate anti-displacement strategies? ....	<input type="text"/>
	host stewardship/educational opportunities? ..	<input type="text"/>
	generate economic development/create jobs?	<input type="text"/>
	build on existing local grassroots efforts? ....	<input type="text"/>
<b>Living Legacy</b>	cross a significant historical site? .....	<input type="text"/>
	avoid sensitive historical resources? .....	<input type="text"/>
	connect to an area suitable for growth? .....	<input type="text"/>
	be implemented in the near future? .....	<input type="text"/>
	be a model for other sites? .....	<input type="text"/>



## TELL US MORE ABOUT THIS SITE ...

### PROS

.....  
.....  
.....  
.....  
.....  
.....  
.....  
.....  
.....  
.....  
.....  
.....  
.....  
.....

### CONS

.....  
.....  
.....  
.....  
.....  
.....  
.....  
.....  
.....  
.....  
.....  
.....  
.....  
.....

## ADDITIONAL COMMENTS

.....  
.....  
.....  
.....  
.....  
.....  
.....  
.....  
.....  
.....  
.....

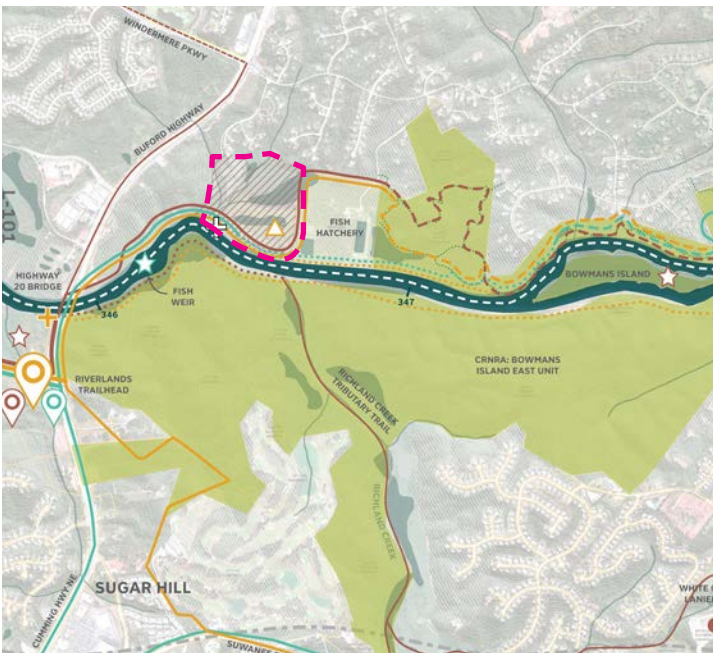
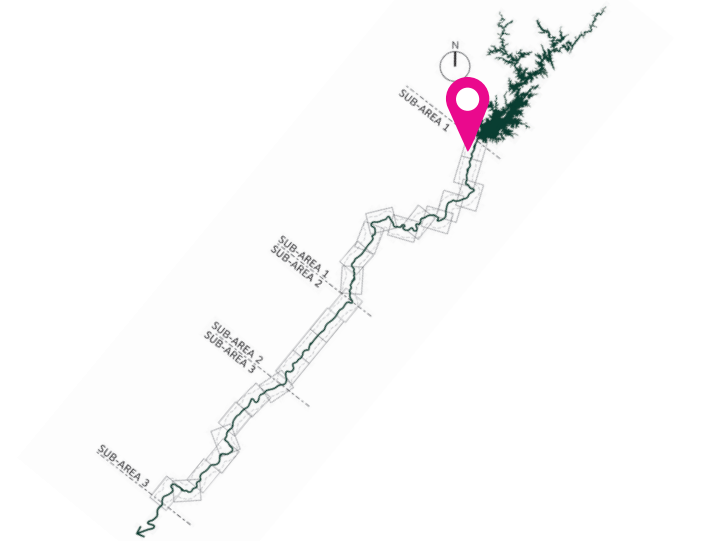
## DO YOU THINK THIS SITE SHOULD BE A DEMONSTRATION SITE?

(mark one)

———  ———  ———  ———  ———  ———  **Strongly Disagree** **Neutral** **Strongly Agree**

Name: ..... Organization: .....

# RC AKERS



## SITE FACTS

Location: **Cumming, Forsyth County**  
 Map tile: **L-100**  
 Sub-Area: **1**  
 Size: **35 acres**  
 Ownership: **Trust for Public Land**  
 Description: **Small new RiverLands park along the river.**

## SCORE CARD

Can this site fulfill the four design goals? Rate each goal on a scale of 1 to 5:

**1** = Not possible / **2** = Probably not possible / **3** = Maybe possible  
**4** = Most likely possible / **5** = Definitely possible!

### CAN THIS SITE ...

		Score
<b>Safe, Connective Corridor</b>	accommodate multi-modal use? .....	<input type="text"/>
	connect to public transit? .....	<input type="text"/>
	include universal access to the River? .....	<input type="text"/>
	connect to existing regional trails? .....	<input type="text"/>
	safely connect communities to the River? .....	<input type="text"/>
<b>Ecological Refuge for the Region</b>	enhance ecological connectivity? .....	<input type="text"/>
	include tributary restoration? .....	<input type="text"/>
	include restoration potential? .....	<input type="text"/>
	intersect a MRPA category E or F zone? .....	<input type="text"/>
	balance access to an eco-sensitive area? .....	<input type="text"/>
<b>Common Ground for All</b>	make new public space where it is lacking? ...	<input type="text"/>
	demonstrate anti-displacement strategies? ....	<input type="text"/>
	host stewardship/educational opportunities? ..	<input type="text"/>
	generate economic development/create jobs?	<input type="text"/>
	build on existing local grassroots efforts? ....	<input type="text"/>
<b>Living Legacy</b>	cross a significant historical site? .....	<input type="text"/>
	avoid sensitive historical resources? .....	<input type="text"/>
	connect to an area suitable for growth? .....	<input type="text"/>
	be implemented in the near future? .....	<input type="text"/>
	be a model for other sites? .....	<input type="text"/>

**TELL US MORE ABOUT THIS SITE ...**

**PROS**

.....

.....

.....

.....

.....

.....

.....

.....

.....

.....

.....

.....

.....

.....

.....

.....

.....

.....

.....

.....

.....

.....

**CONS**

.....

.....

.....

.....

.....

.....

.....

.....

.....

.....

.....

.....

.....

.....

.....

.....

.....

.....

.....

.....

.....

**ADDITIONAL COMMENTS**

.....

.....

.....

.....

.....

.....

.....

.....

.....

.....

.....

.....

.....

.....

.....

.....

.....

.....

.....

.....

.....

.....

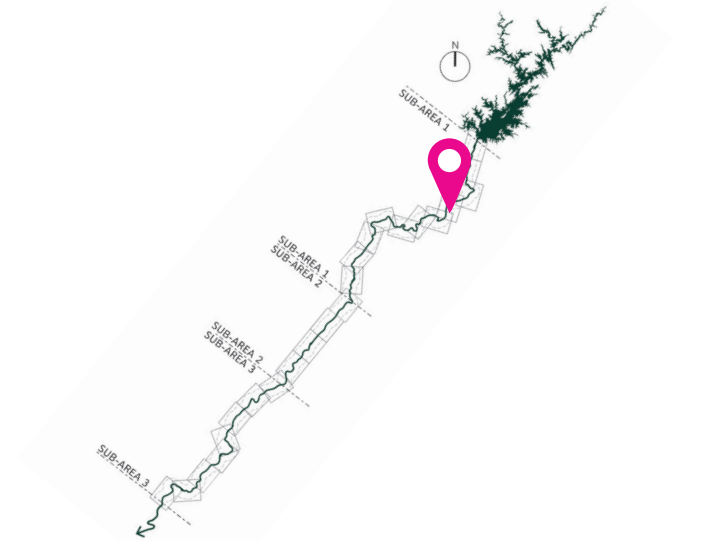
**DO YOU THINK THIS SITE SHOULD BE A DEMONSTRATION SITE?**

(mark one)

**Strongly Disagree**                   **Neutral**                   **Strongly Agree**

Name: ..... Organization: .....

# PEACHTREE INDUSTRIAL BLVD



## SITE FACTS

Location: **Duluth, Gwinnett County**

Map tile: **L-103**

Sub-Area: **1**

Size: **1 linear mile**

Ownership: **Public right-of-way**

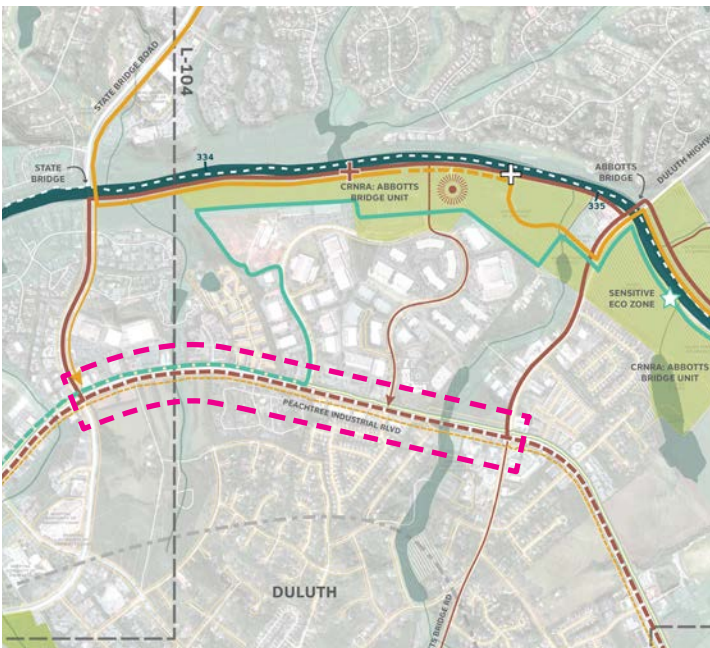
Description: **Existing expressway, could become a model mile.**

## SCORE CARD

Can this site fulfill the four design goals? Rate each goal on a scale of 1 to 5:

**1** = Not possible / **2** = Probably not possible / **3** = Maybe possible  
**4** = Most likely possible / **5** = Definitely possible!

## CAN THIS SITE ...



		Score
<b>Safe, Connective Corridor</b>	accommodate multi-modal use? .....	<input type="text"/>
	connect to public transit? .....	<input type="text"/>
	include universal access to the River? .....	<input type="text"/>
	connect to existing regional trails? .....	<input type="text"/>
	safely connect communities to the River? .....	<input type="text"/>

<b>Ecological Refuge for the Region</b>	enhance ecological connectivity? .....	<input type="text"/>
	include tributary restoration? .....	<input type="text"/>
	include restoration potential? .....	<input type="text"/>
	intersect a MRPA category E or F zone? .....	<input type="text"/>
	balance access to an eco-sensitive area? .....	<input type="text"/>

<b>Common Ground for All</b>	make new public space where it is lacking? ...	<input type="text"/>
	demonstrate anti-displacement strategies? ...	<input type="text"/>
	host stewardship/educational opportunities? ..	<input type="text"/>
	generate economic development/create jobs?	<input type="text"/>
	build on existing local grassroots efforts? ....	<input type="text"/>

<b>Living Legacy</b>	cross a significant historical site? .....	<input type="text"/>
	avoid sensitive historical resources? .....	<input type="text"/>
	connect to an area suitable for growth? .....	<input type="text"/>
	be implemented in the near future? .....	<input type="text"/>
	be a model for other sites? .....	<input type="text"/>



**TELL US MORE ABOUT THIS SITE ...**

**PROS**

.....

.....

.....

.....

.....

.....

.....

.....

.....

.....

.....

.....

.....

.....

.....

.....

.....

.....

.....

.....

.....

.....

**CONS**

.....

.....

.....

.....

.....

.....

.....

.....

.....

.....

.....

.....

.....

.....

.....

.....

.....

.....

.....

.....

.....

.....

**ADDITIONAL COMMENTS**

.....

.....

.....

.....

.....

.....

.....

.....

.....

.....

.....

.....

.....

.....

.....

.....

.....

.....

.....

.....

.....

.....

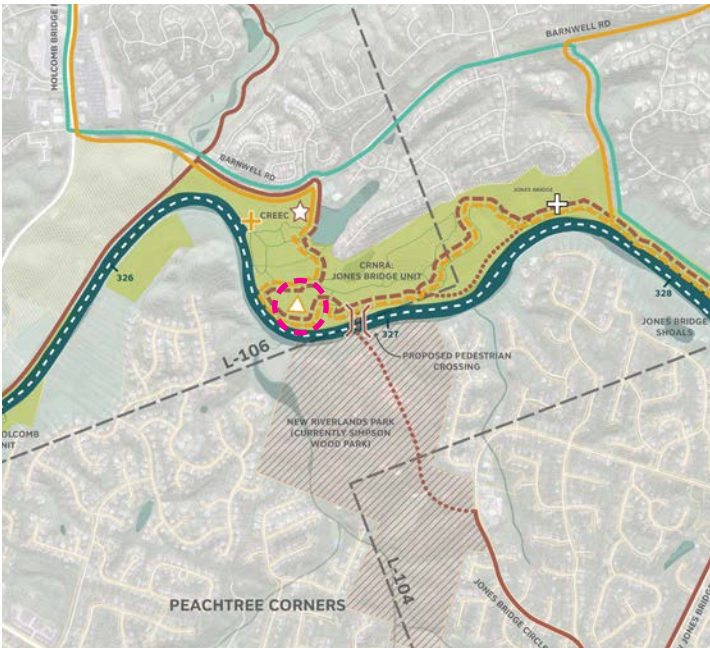
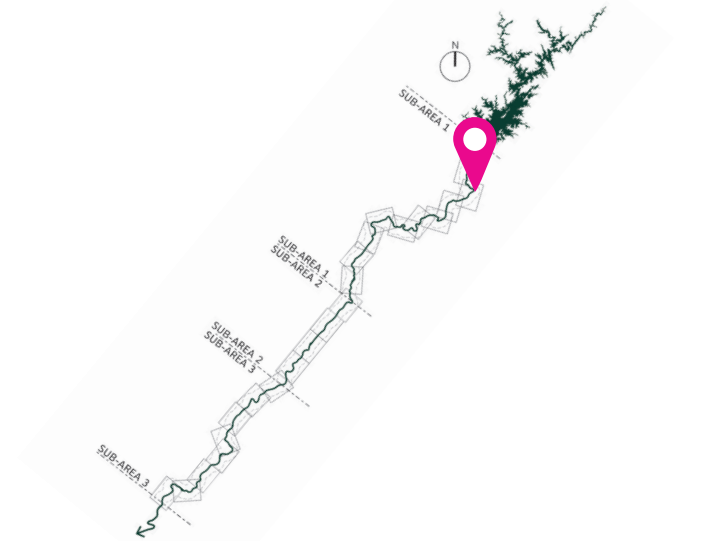
**DO YOU THINK THIS SITE SHOULD BE A DEMONSTRATION SITE?**

(mark one)

**Strongly Disagree**                   **Neutral**                   **Strongly Agree**

Name: ..... Organization: .....

# PADDLE CAMP AT JONES BRIDGE UNIT



## SITE FACTS

Location: **Chattahoochee River National Recreation Area: Jones Bridge Unit, Fulton County**

Map tile: **L-105**

Sub-Area: **1**

Size: **N/A**

Ownership: **National Park Service - CRNRA**

Description: **Overnight campsite within existing national recreation area.**

## SCORE CARD

Can this site fulfill the four design goals? Rate each goal on a scale of 1 to 5:

**1** = Not possible / **2** = Probably not possible / **3** = Maybe possible  
**4** = Most likely possible / **5** = Definitely possible!

## CAN THIS SITE ...

		Score
<b>Safe, Connective Corridor</b>	accommodate multi-modal use? .....	<input type="text"/>
	connect to public transit? .....	<input type="text"/>
	include universal access to the River? .....	<input type="text"/>
	connect to existing regional trails? .....	<input type="text"/>
	safely connect communities to the River? .....	<input type="text"/>

<b>Ecological Refuge for the Region</b>	enhance ecological connectivity? .....	<input type="text"/>
	include tributary restoration? .....	<input type="text"/>
	include restoration potential? .....	<input type="text"/>
	intersect a MRPA category E or F zone? .....	<input type="text"/>
	balance access to an eco-sensitive area? .....	<input type="text"/>

<b>Common Ground for All</b>	make new public space where it is lacking? ...	<input type="text"/>
	demonstrate anti-displacement strategies? ....	<input type="text"/>
	host stewardship/educational opportunities? ..	<input type="text"/>
	generate economic development/create jobs? ..	<input type="text"/>
	build on existing local grassroots efforts? ....	<input type="text"/>

<b>Living Legacy</b>	cross a significant historical site? .....	<input type="text"/>
	avoid sensitive historical resources? .....	<input type="text"/>
	connect to an area suitable for growth? .....	<input type="text"/>
	be implemented in the near future? .....	<input type="text"/>
	be a model for other sites? .....	<input type="text"/>

**TELL US MORE ABOUT THIS SITE ...**

**PROS**

.....

.....

.....

.....

.....

.....

.....

.....

.....

.....

.....

.....

.....

.....

**CONS**

.....

.....

.....

.....

.....

.....

.....

.....

.....

.....

.....

.....

.....

.....

**ADDITIONAL COMMENTS**

.....

.....

.....

.....

.....

.....

.....

.....

.....

.....

.....

**DO YOU THINK THIS SITE SHOULD BE A DEMONSTRATION SITE?**

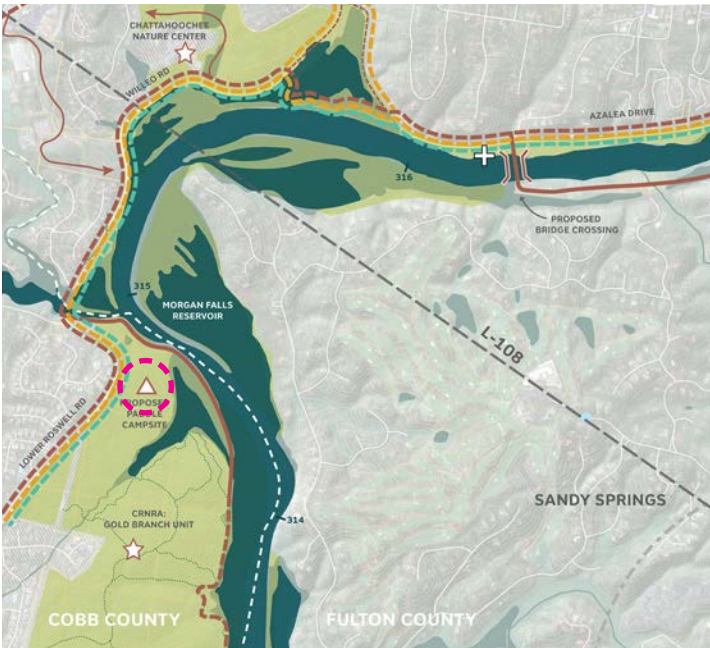
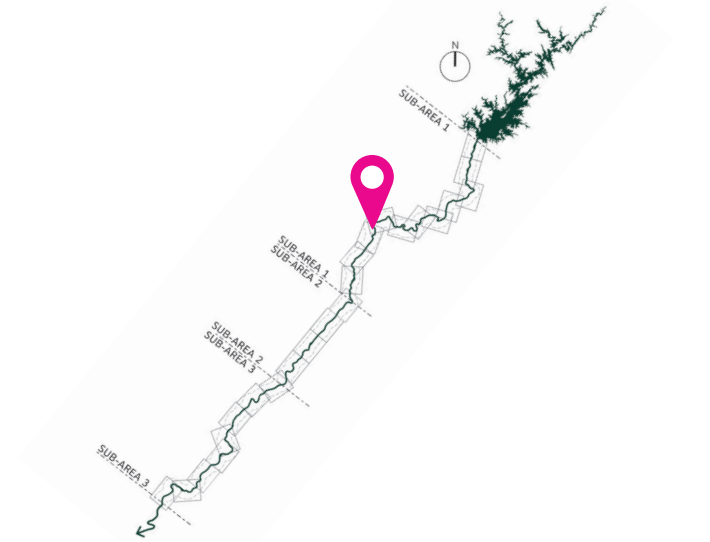
(mark one)

———  ———  ———  ———  ———  ———

**Strongly Disagree** **Neutral** **Strongly Agree**

Name: ..... Organization: .....

# PADDLE CAMP AT GOLD BRANCH UNIT



## SITE FACTS

Location: **Gold Branch Unit, Cobb County**

Map tile: **L-107**

Sub-Area: **1**

Size: **N/A**

Ownership: **National Park Service - CRNRA**

Description: **Overnight campsite within existing national recreation area.**

## SCORE CARD

Can this site fulfill the four design goals? Rate each goal on a scale of 1 to 5:

**1** = Not possible / **2** = Probably not possible / **3** = Maybe possible  
**4** = Most likely possible / **5** = Definitely possible!

## CAN THIS SITE ...

	Score	
<b>Safe, Connective Corridor</b>	accommodate multi-modal use? .....	<input type="text"/>
	connect to public transit? .....	<input type="text"/>
	include universal access to the River? .....	<input type="text"/>
	connect to existing regional trails? .....	<input type="text"/>
	safely connect communities to the River? .....	<input type="text"/>

<b>Ecological Refuge for the Region</b>	enhance ecological connectivity? .....	<input type="text"/>
	include tributary restoration? .....	<input type="text"/>
	include restoration potential? .....	<input type="text"/>
	intersect a MRPA category E or F zone? .....	<input type="text"/>
	balance access to an eco-sensitive area? .....	<input type="text"/>

<b>Common Ground for All</b>	make new public space where it is lacking? ...	<input type="text"/>
	demonstrate anti-displacement strategies? ....	<input type="text"/>
	host stewardship/educational opportunities? ..	<input type="text"/>
	generate economic development/create jobs?	<input type="text"/>
	build on existing local grassroots efforts? ....	<input type="text"/>

<b>Living Legacy</b>	cross a significant historical site? .....	<input type="text"/>
	avoid sensitive historical resources? .....	<input type="text"/>
	connect to an area suitable for growth? .....	<input type="text"/>
	be implemented in the near future? .....	<input type="text"/>
	be a model for other sites? .....	<input type="text"/>





# TRAILHEAD AT BIG CREEK

## SITE FACTS

Location: **Roswell, Fulton County**

Map tile: **L-107**

Sub-Area: **1**

Size: **N/A**

Ownership: **Fulton County, National Park Service - CRNRA**

Description: **Connect Vickery Creek National recreation area to Chattahoochee River and existing city parks along Big Creek.**

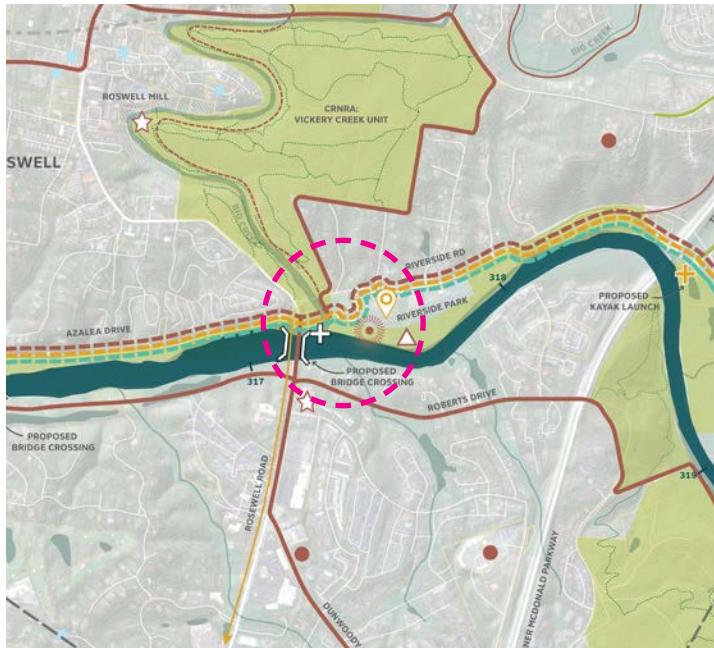
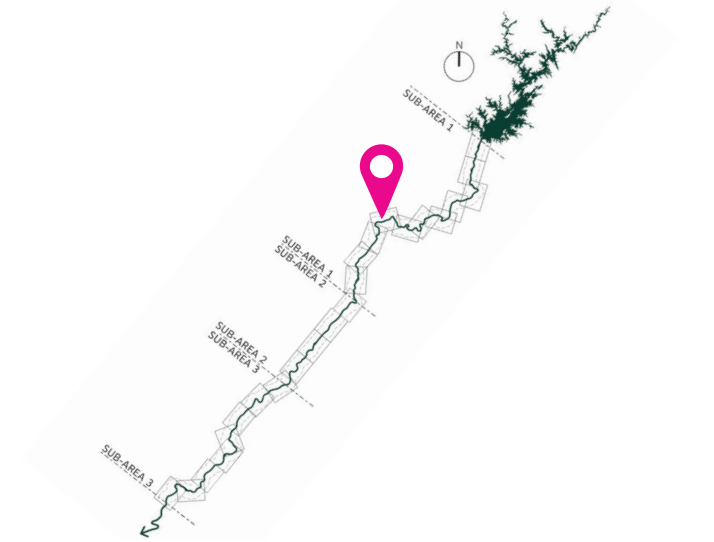
## SCORE CARD

Can this site fulfill the four design goals? Rate each goal on a scale of 1 to 5:

**1** = Not possible / **2** = Probably not possible / **3** = Maybe possible  
**4** = Most likely possible / **5** = Definitely possible!

### CAN THIS SITE ...

		Score
<b>Safe, Connective Corridor</b>	accommodate multi-modal use? .....	<input type="text"/>
	connect to public transit? .....	<input type="text"/>
	include universal access to the River? .....	<input type="text"/>
	connect to existing regional trails? .....	<input type="text"/>
	safely connect communities to the River? .....	<input type="text"/>
<b>Ecological Refuge for the Region</b>	enhance ecological connectivity? .....	<input type="text"/>
	include tributary restoration? .....	<input type="text"/>
	include restoration potential? .....	<input type="text"/>
	intersect a MRPA category E or F zone? .....	<input type="text"/>
<b>Common Ground for All</b>	balance access to an eco-sensitive area? .....	<input type="text"/>
	make new public space where it is lacking? ...	<input type="text"/>
	demonstrate anti-displacement strategies? ....	<input type="text"/>
	host stewardship/educational opportunities? ..	<input type="text"/>
<b>Living Legacy</b>	generate economic development/create jobs?	<input type="text"/>
	build on existing local grassroots efforts? ....	<input type="text"/>
	cross a significant historical site? .....	<input type="text"/>
	avoid sensitive historical resources? .....	<input type="text"/>
	connect to an area suitable for growth? .....	<input type="text"/>
	be implemented in the near future? .....	<input type="text"/>
	be a model for other sites? .....	<input type="text"/>



**TELL US MORE ABOUT THIS SITE ...**

**PROS**

.....

.....

.....

.....

.....

.....

.....

.....

.....

.....

.....

.....

.....

.....

.....

.....

.....

.....

.....

.....

.....

.....

**CONS**

.....

.....

.....

.....

.....

.....

.....

.....

.....

.....

.....

.....

.....

.....

.....

.....

.....

.....

.....

.....

.....

.....

**ADDITIONAL COMMENTS**

.....

.....

.....

.....

.....

.....

.....

.....

.....

.....

.....

.....

.....

.....

.....

.....

.....

.....

.....

.....

.....

.....

**DO YOU THINK THIS SITE SHOULD BE A DEMONSTRATION SITE?**

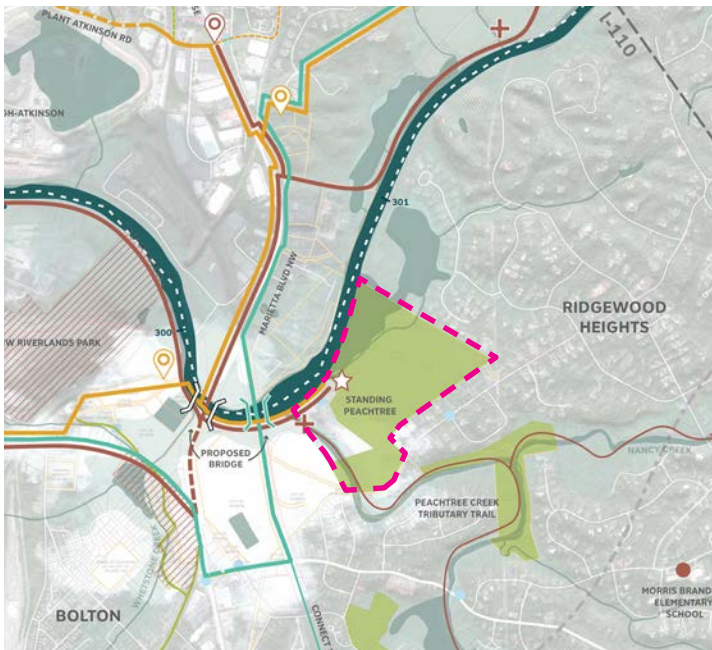
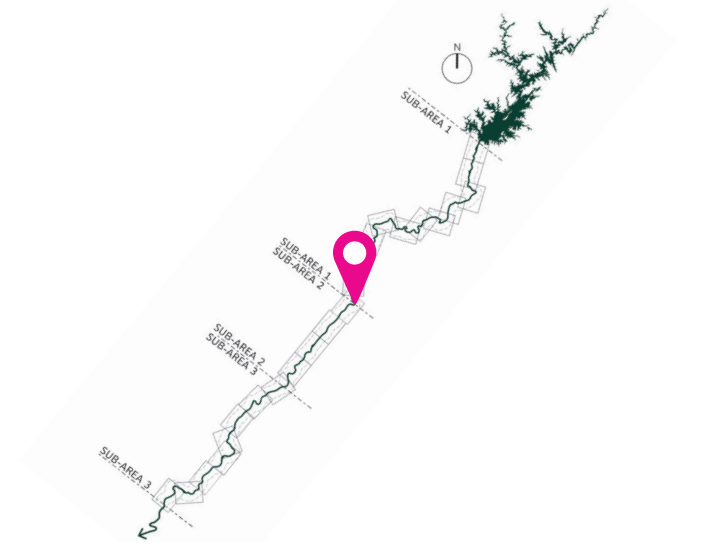
(mark one)

—  —  —  —  —  —

**Strongly Disagree** **Neutral** **Strongly Agree**

Name: ..... Organization: .....

# STANDING PEACHTREE PARK



## SITE FACTS

Location: **Atlanta, Fulton County**

Map tile: **L-111**

Sub-Area: **1-2**

Size: **97 acres**

Ownership: **City of Atlanta**

Description: **Develop plan to improve public access and amenities at existing park.**

## SCORE CARD

Can this site fulfill the four design goals? Rate each goal on a scale of 1 to 5:

**1** = Not possible / **2** = Probably not possible / **3** = Maybe possible  
**4** = Most likely possible / **5** = Definitely possible!

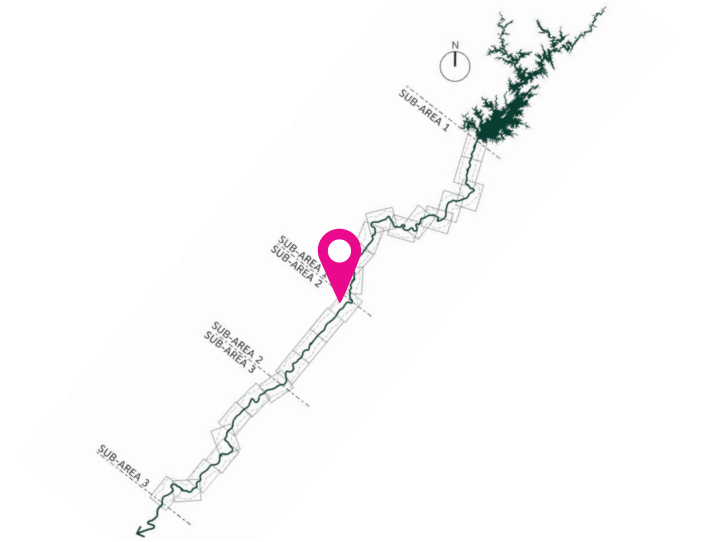
### CAN THIS SITE ...

		Score
<b>Safe, Connective Corridor</b>	accommodate multi-modal use? .....	<input type="text"/>
	connect to public transit? .....	<input type="text"/>
	include universal access to the River? .....	<input type="text"/>
	connect to existing regional trails? .....	<input type="text"/>
	safely connect communities to the River? .....	<input type="text"/>
<b>Ecological Refuge for the Region</b>	enhance ecological connectivity? .....	<input type="text"/>
	include tributary restoration? .....	<input type="text"/>
	include restoration potential? .....	<input type="text"/>
	intersect a MRPA category E or F zone? .....	<input type="text"/>
<b>Common Ground for All</b>	balance access to an eco-sensitive area? .....	<input type="text"/>
	make new public space where it is lacking? ...	<input type="text"/>
	demonstrate anti-displacement strategies? ....	<input type="text"/>
	host stewardship/educational opportunities? ..	<input type="text"/>
	generate economic development/create jobs? ..	<input type="text"/>
<b>Living Legacy</b>	build on existing local grassroots efforts? ....	<input type="text"/>
	cross a significant historical site? .....	<input type="text"/>
	avoid sensitive historical resources? .....	<input type="text"/>
	connect to an area suitable for growth? .....	<input type="text"/>
	be implemented in the near future? .....	<input type="text"/>
	be a model for other sites? .....	<input type="text"/>





# McDONOUGH-ATKINSON BROWNFIELD



## SITE FACTS

Location: **Atlanta, Cobb County**

Map tile: **L-111**

Sub-Area: **2**

Size: **160 acres**

Ownership: **Georgia Power Company**

Description: **Opportunity to restore polluted coal ash pits and create new public space.**

## SCORE CARD

Can this site fulfill the four design goals? Rate each goal on a scale of 1 to 5:

**1** = Not possible / **2** = Probably not possible / **3** = Maybe possible  
**4** = Most likely possible / **5** = Definitely possible!

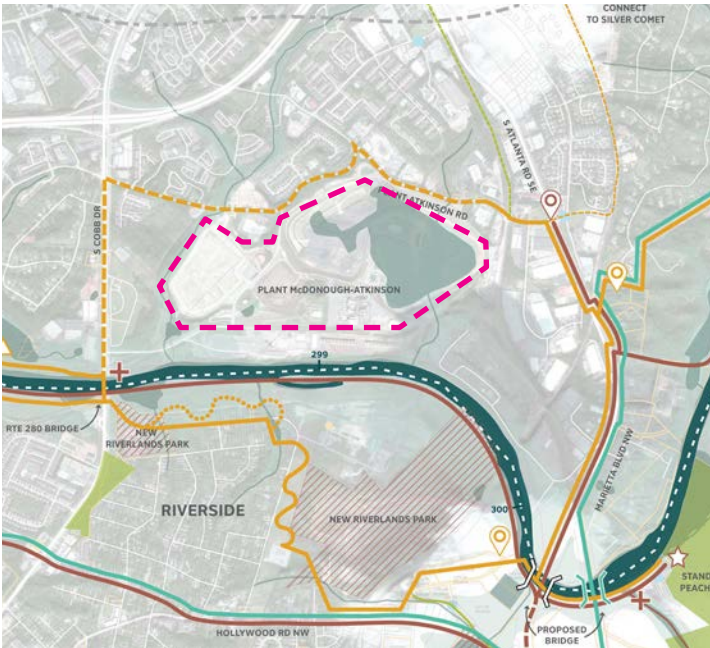
### CAN THIS SITE ...

	Score	
<b>Safe, Connective Corridor</b>	accommodate multi-modal use? .....	<input type="text"/>
	connect to public transit? .....	<input type="text"/>
	include universal access to the River? .....	<input type="text"/>
	connect to existing regional trails? .....	<input type="text"/>
	safely connect communities to the River? .....	<input type="text"/>

<b>Ecological Refuge for the Region</b>	enhance ecological connectivity? .....	<input type="text"/>
	include tributary restoration? .....	<input type="text"/>
	include restoration potential? .....	<input type="text"/>
	intersect a MRPA category E or F zone? .....	<input type="text"/>
	balance access to an eco-sensitive area? .....	<input type="text"/>

<b>Common Ground for All</b>	make new public space where it is lacking? ...	<input type="text"/>
	demonstrate anti-displacement strategies? ...	<input type="text"/>
	host stewardship/educational opportunities? ..	<input type="text"/>
	generate economic development/create jobs?	<input type="text"/>
	build on existing local grassroots efforts? ....	<input type="text"/>

<b>Living Legacy</b>	cross a significant historical site? .....	<input type="text"/>
	avoid sensitive historical resources? .....	<input type="text"/>
	connect to an area suitable for growth? .....	<input type="text"/>
	be implemented in the near future? .....	<input type="text"/>
	be a model for other sites? .....	<input type="text"/>





# ATLANTA RIVERLANDS PARK

## SITE FACTS

Location: **Atlanta, Cobb County**

Map tile: **L-111**

Sub-Area: **2**

Size: **115 acres**

Ownership: **Georgia Waste System Inc., Chambers of Georgia Inc.**

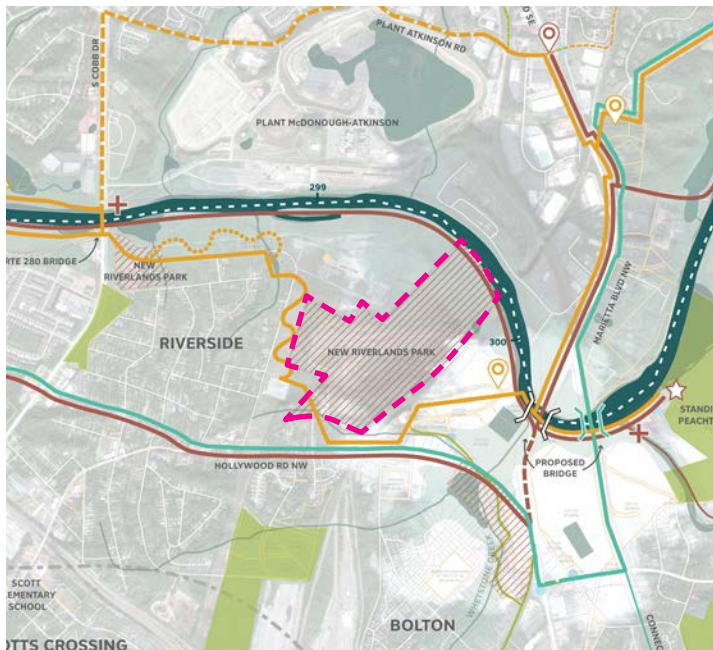
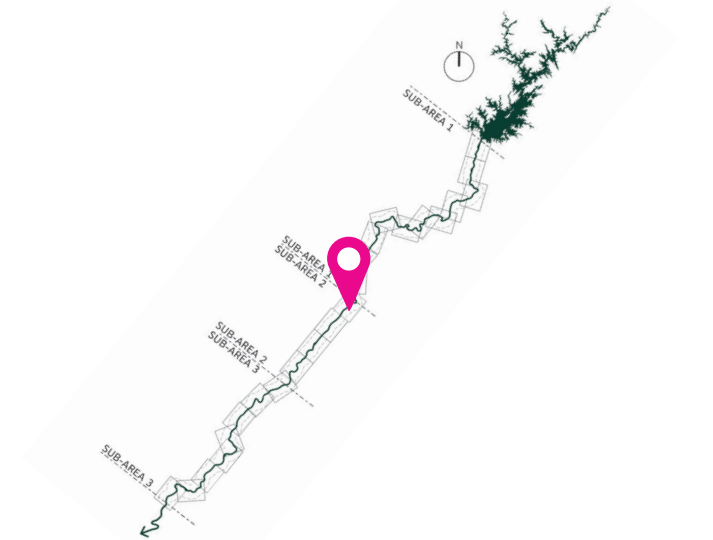
Description: **Opportunity to create park extending to the river on top of tall capped landfill in Atlanta.**

## SCORE CARD

Can this site fulfill the four design goals? Rate each goal on a scale of 1 to 5:

**1** = Not possible / **2** = Probably not possible / **3** = Maybe possible  
**4** = Most likely possible / **5** = Definitely possible!

### CAN THIS SITE ...

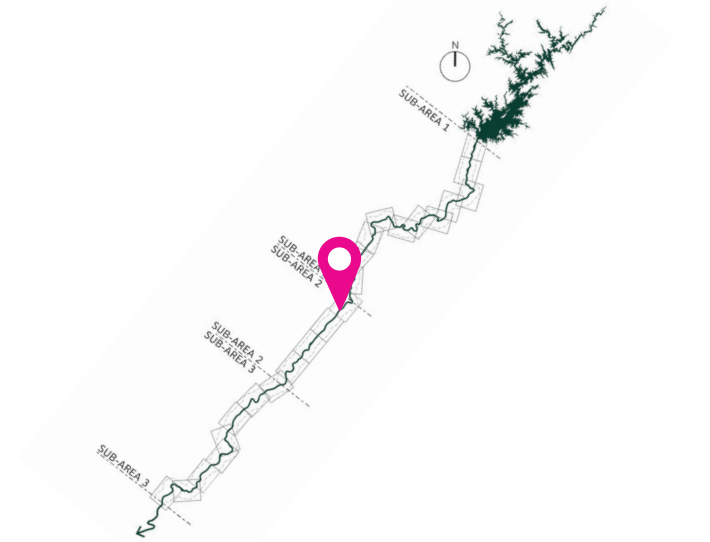


		Score
<b>Safe, Connective Corridor</b>	accommodate multi-modal use? .....	<input type="text"/>
	connect to public transit? .....	<input type="text"/>
	include universal access to the River? .....	<input type="text"/>
	connect to existing regional trails? .....	<input type="text"/>
	safely connect communities to the River? .....	<input type="text"/>
<b>Ecological Refuge for the Region</b>	enhance ecological connectivity? .....	<input type="text"/>
	include tributary restoration? .....	<input type="text"/>
	include restoration potential? .....	<input type="text"/>
	intersect a MRPA category E or F zone? .....	<input type="text"/>
	balance access to an eco-sensitive area? .....	<input type="text"/>
<b>Common Ground for All</b>	make new public space where it is lacking? ...	<input type="text"/>
	demonstrate anti-displacement strategies? ....	<input type="text"/>
	host stewardship/educational opportunities? ..	<input type="text"/>
	generate economic development/create jobs?	<input type="text"/>
	build on existing local grassroots efforts? ....	<input type="text"/>
<b>Living Legacy</b>	cross a significant historical site? .....	<input type="text"/>
	avoid sensitive historical resources? .....	<input type="text"/>
	connect to an area suitable for growth? .....	<input type="text"/>
	be implemented in the near future? .....	<input type="text"/>
	be a model for other sites? .....	<input type="text"/>





# PROCTOR CREEK TRAIL EXTENSION



## SITE FACTS

Location: **Atlanta, Fulton County**

Map tile: **L-111**

Sub-Area: **2**

Size: **N/A**

Ownership: **City of Atlanta, Atlanta Industrial Park Owners Association Inc., Dollarman Investments, Chattahoochee Trails LLC**

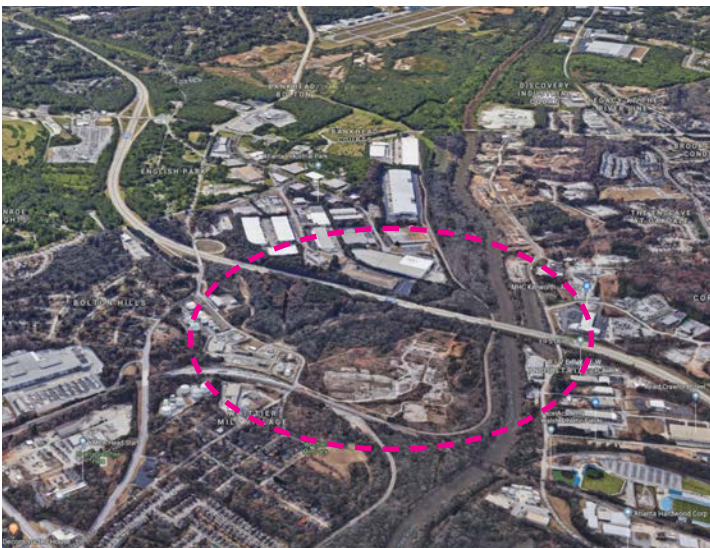
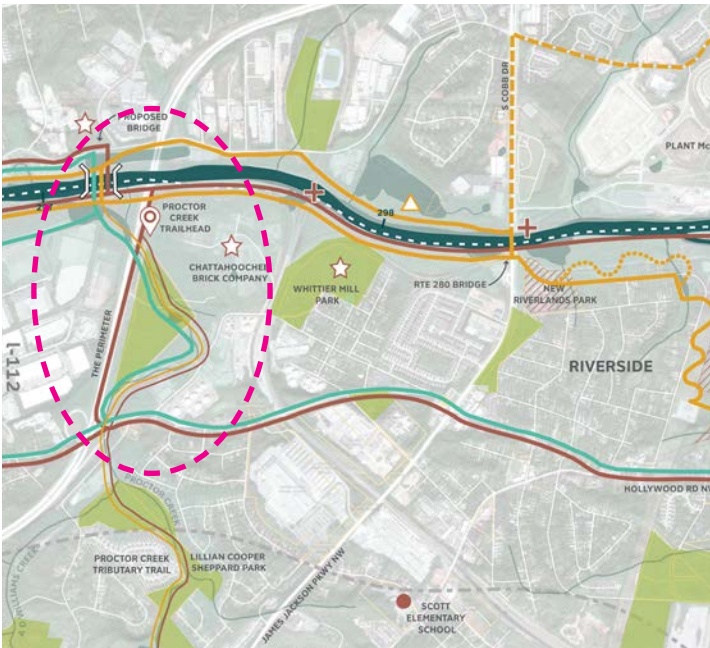
Description: **Explore opportunities for park and stronger connectivity where Proctor Creek flows into the Chattahoochee River.**

## SCORE CARD

Can this site fulfill the four design goals? Rate each goal on a scale of 1 to 5:

**1** = Not possible / **2** = Probably not possible / **3** = Maybe possible  
**4** = Most likely possible / **5** = Definitely possible!

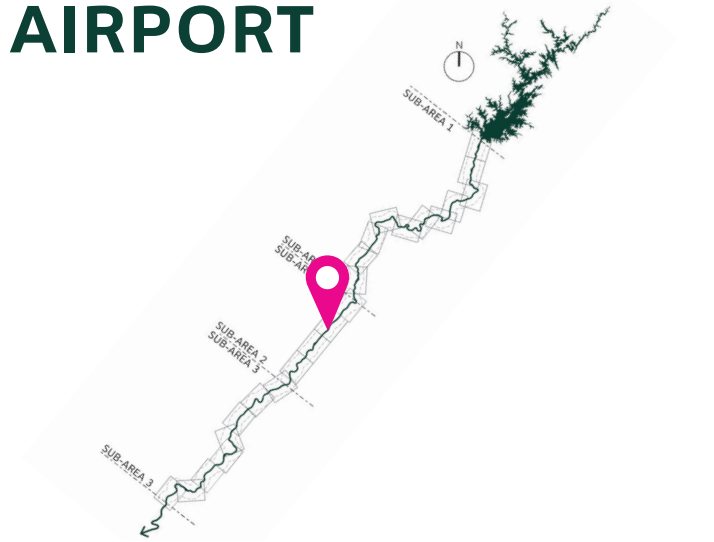
## CAN THIS SITE ...



		Score
<b>Safe, Connective Corridor</b>	accommodate multi-modal use? .....	<input type="text"/>
	connect to public transit? .....	<input type="text"/>
	include universal access to the River? .....	<input type="text"/>
	connect to existing regional trails? .....	<input type="text"/>
	safely connect communities to the River? .....	<input type="text"/>
<b>Ecological Refuge for the Region</b>	enhance ecological connectivity? .....	<input type="text"/>
	include tributary restoration? .....	<input type="text"/>
	include restoration potential? .....	<input type="text"/>
	intersect a MRPA category E or F zone? .....	<input type="text"/>
<b>Common Ground for All</b>	balance access to an eco-sensitive area? .....	<input type="text"/>
	make new public space where it is lacking? ...	<input type="text"/>
	demonstrate anti-displacement strategies? ....	<input type="text"/>
	host stewardship/educational opportunities? ..	<input type="text"/>
<b>Living Legacy</b>	generate economic development/create jobs?	<input type="text"/>
	build on existing local grassroots efforts? ....	<input type="text"/>
	cross a significant historical site? .....	<input type="text"/>
	avoid sensitive historical resources? .....	<input type="text"/>
	connect to an area suitable for growth? .....	<input type="text"/>
	be implemented in the near future? .....	<input type="text"/>
	be a model for other sites? .....	<input type="text"/>



# FULTON COUNTY CHARLIE BROWN AIRPORT



## SITE FACTS

Location: **Atlanta, Fulton County**

Map tile: **L-112**

Sub-Area: **2**

Size: **1 linear mile**

Ownership: **Fulton County**

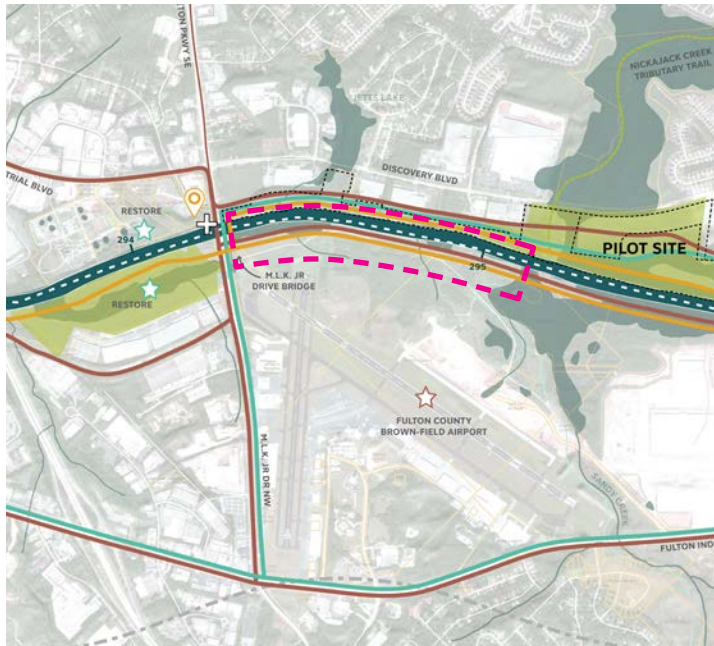
Description: **Utilize and improve existing maintenance pathway for bike trail along river.**

## SCORE CARD

Can this site fulfill the four design goals? Rate each goal on a scale of 1 to 5:

**1** = Not possible / **2** = Probably not possible / **3** = Maybe possible  
**4** = Most likely possible / **5** = Definitely possible!

## CAN THIS SITE ...

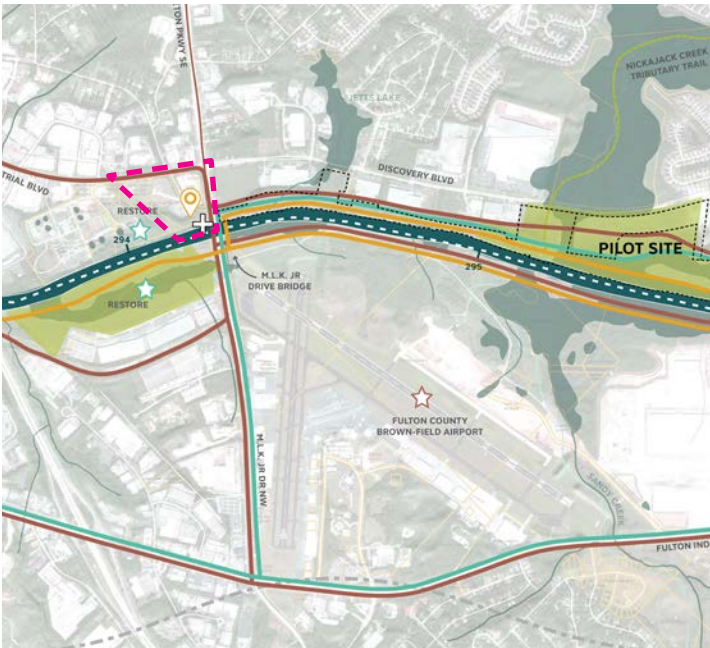
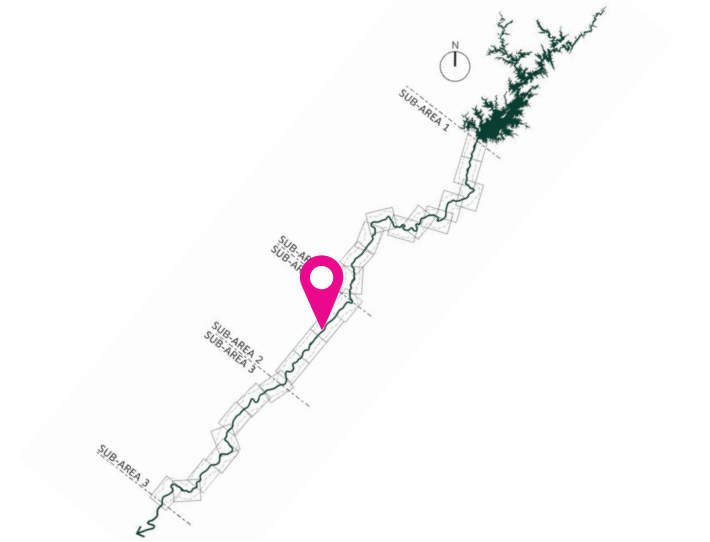


		Score
<b>Safe, Connective Corridor</b>	accommodate multi-modal use? .....	<input type="text"/>
	connect to public transit? .....	<input type="text"/>
	include universal access to the River? .....	<input type="text"/>
	connect to existing regional trails? .....	<input type="text"/>
	safely connect communities to the River? .....	<input type="text"/>
<b>Ecological Refuge for the Region</b>	enhance ecological connectivity? .....	<input type="text"/>
	include tributary restoration? .....	<input type="text"/>
	include restoration potential? .....	<input type="text"/>
	intersect a MRPA category E or F zone? .....	<input type="text"/>
	balance access to an eco-sensitive area? .....	<input type="text"/>
<b>Common Ground for All</b>	make new public space where it is lacking? ...	<input type="text"/>
	demonstrate anti-displacement strategies? ....	<input type="text"/>
	host stewardship/educational opportunities? ..	<input type="text"/>
	generate economic development/create jobs?	<input type="text"/>
	build on existing local grassroots efforts? ....	<input type="text"/>
<b>Living Legacy</b>	cross a significant historical site? .....	<input type="text"/>
	avoid sensitive historical resources? .....	<input type="text"/>
	connect to an area suitable for growth? .....	<input type="text"/>
	be implemented in the near future? .....	<input type="text"/>
	be a model for other sites? .....	<input type="text"/>





# MABLETON PARKWAY TRAILHEAD



## SITE FACTS

Location: **Mableton, Cobb County**

Map tile: **L-112**

Sub-Area: **2**

Size: **16 acres**

Ownership: **Cobb County**

Description: **ADA accessible access to the river and pilot site. Could include, park space, comfort station, boat ramp, amenities, etc.**

## SCORE CARD

Can this site fulfill the four design goals? Rate each goal on a scale of 1 to 5:

**1** = Not possible / **2** = Probably not possible / **3** = Maybe possible  
**4** = Most likely possible / **5** = Definitely possible!

## CAN THIS SITE ...

		Score
<b>Safe, Connective Corridor</b>	accommodate multi-modal use? .....	<input type="text"/>
	connect to public transit? .....	<input type="text"/>
	include universal access to the River? .....	<input type="text"/>
	connect to existing regional trails? .....	<input type="text"/>
	safely connect communities to the River? .....	<input type="text"/>

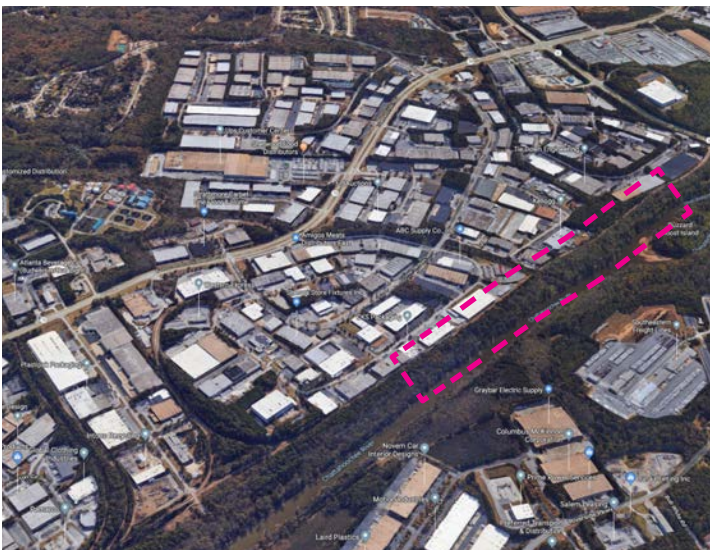
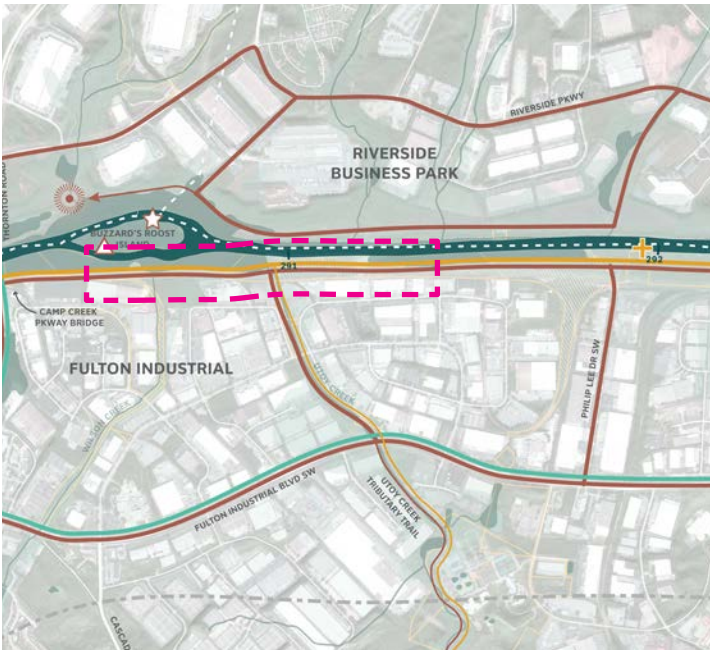
<b>Ecological Refuge for the Region</b>	enhance ecological connectivity? .....	<input type="text"/>
	include tributary restoration? .....	<input type="text"/>
	include restoration potential? .....	<input type="text"/>
	intersect a MRPA category E or F zone? .....	<input type="text"/>
	balance access to an eco-sensitive area? .....	<input type="text"/>

<b>Common Ground for All</b>	make new public space where it is lacking? ...	<input type="text"/>
	demonstrate anti-displacement strategies? ....	<input type="text"/>
	host stewardship/educational opportunities? ..	<input type="text"/>
	generate economic development/create jobs?	<input type="text"/>
	build on existing local grassroots efforts? ....	<input type="text"/>

<b>Living Legacy</b>	cross a significant historical site? .....	<input type="text"/>
	avoid sensitive historical resources? .....	<input type="text"/>
	connect to an area suitable for growth? .....	<input type="text"/>
	be implemented in the near future? .....	<input type="text"/>
	be a model for other sites? .....	<input type="text"/>



# FULTON INDUSTRIAL RIVER TRAIL



## SITE FACTS

Location: **Atlanta, Fulton County**

Map tile: **L-113**

Sub-Area: **2**

Size: **1 linear mile**

Ownership: **Fulton County**

Description: **Restoration and stormwater management opportunities for riparian zone with pedestrian and bike access along the river.**

## SCORE CARD

Can this site fulfill the four design goals? Rate each goal on a scale of 1 to 5:

**1** = Not possible / **2** = Probably not possible / **3** = Maybe possible  
**4** = Most likely possible / **5** = Definitely possible!

### CAN THIS SITE ...

		Score
<b>Safe, Connective Corridor</b>	accommodate multi-modal use? .....	<input type="text"/>
	connect to public transit? .....	<input type="text"/>
	include universal access to the River? .....	<input type="text"/>
	connect to existing regional trails? .....	<input type="text"/>
	safely connect communities to the River? .....	<input type="text"/>
<b>Ecological Refuge for the Region</b>	enhance ecological connectivity? .....	<input type="text"/>
	include tributary restoration? .....	<input type="text"/>
	include restoration potential? .....	<input type="text"/>
	intersect a MRPA category E or F zone? .....	<input type="text"/>
	balance access to an eco-sensitive area? .....	<input type="text"/>
<b>Common Ground for All</b>	make new public space where it is lacking? ...	<input type="text"/>
	demonstrate anti-displacement strategies? ....	<input type="text"/>
	host stewardship/educational opportunities? ..	<input type="text"/>
	generate economic development/create jobs? ..	<input type="text"/>
	build on existing local grassroots efforts? ....	<input type="text"/>
<b>Living Legacy</b>	cross a significant historical site? .....	<input type="text"/>
	avoid sensitive historical resources? .....	<input type="text"/>
	connect to an area suitable for growth? .....	<input type="text"/>
	be implemented in the near future? .....	<input type="text"/>
	be a model for other sites? .....	<input type="text"/>



**TELL US MORE ABOUT THIS SITE ...**

**PROS**

.....

.....

.....

.....

.....

.....

.....

.....

.....

.....

.....

.....

.....

.....

.....

.....

.....

.....

.....

.....

.....

.....

**CONS**

.....

.....

.....

.....

.....

.....

.....

.....

.....

.....

.....

.....

.....

.....

.....

.....

.....

.....

.....

.....

.....

**ADDITIONAL COMMENTS**

.....

.....

.....

.....

.....

.....

.....

.....

.....

.....

.....

.....

.....

.....

.....

.....

.....

.....

.....

.....

.....

.....

**DO YOU THINK THIS SITE SHOULD BE A DEMONSTRATION SITE?**

(mark one)

**Strongly Disagree**                   **Neutral**                   **Strongly Agree**

Name: ..... Organization: .....

# FULTON RIVERLANDS PARK



## SITE FACTS

Location: **Fulton County**

Map tile: **L-114**

Sub-Area: **2 & 3**

Size: **390 acres**

Ownership: **River Gobbler LLC, IT River LLC, Boral Bricks Inc., Fulton County**

Description: **New signature park with river access across from Sweetwater Creek State Park, upstream from ONR boat ramp at Highway 154.**

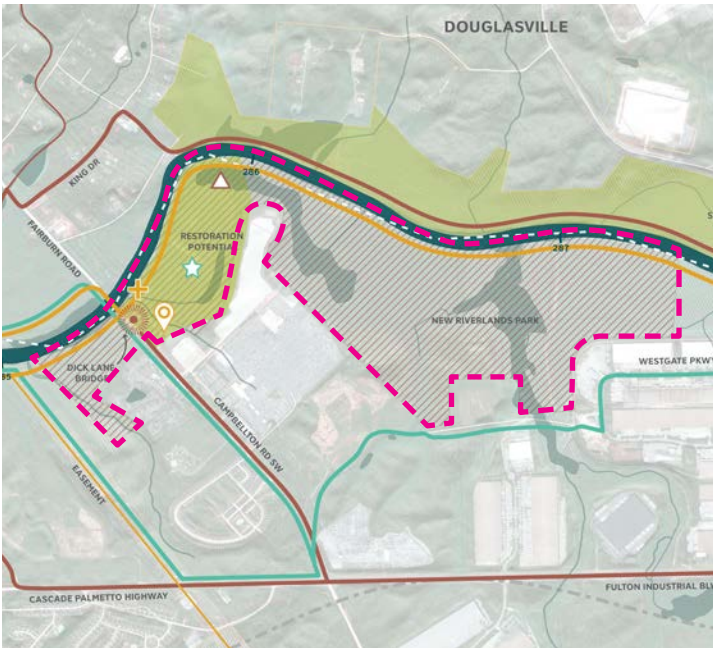
## SCORE CARD

Can this site fulfill the four design goals? Rate each goal on a scale of 1 to 5:

**1** = Not possible / **2** = Probably not possible / **3** = Maybe possible  
**4** = Most likely possible / **5** = Definitely possible!

### CAN THIS SITE ...

		Score
<b>Safe, Connective Corridor</b>	accommodate multi-modal use? .....	<input type="text"/>
	connect to public transit? .....	<input type="text"/>
	include universal access to the River? .....	<input type="text"/>
	connect to existing regional trails? .....	<input type="text"/>
	safely connect communities to the River? .....	<input type="text"/>
<b>Ecological Refuge for the Region</b>	enhance ecological connectivity? .....	<input type="text"/>
	include tributary restoration? .....	<input type="text"/>
	include restoration potential? .....	<input type="text"/>
	intersect a MRPA category E or F zone? .....	<input type="text"/>
	balance access to an eco-sensitive area? .....	<input type="text"/>
<b>Common Ground for All</b>	make new public space where it is lacking? ...	<input type="text"/>
	demonstrate anti-displacement strategies? ....	<input type="text"/>
	host stewardship/educational opportunities? ..	<input type="text"/>
	generate economic development/create jobs? ..	<input type="text"/>
	build on existing local grassroots efforts? ....	<input type="text"/>
<b>Living Legacy</b>	cross a significant historical site? .....	<input type="text"/>
	avoid sensitive historical resources? .....	<input type="text"/>
	connect to an area suitable for growth? .....	<input type="text"/>
	be implemented in the near future? .....	<input type="text"/>
	be a model for other sites? .....	<input type="text"/>



**TELL US MORE ABOUT THIS SITE ...**

**PROS**

.....

.....

.....

.....

.....

.....

.....

.....

.....

.....

.....

.....

.....

.....

.....

.....

.....

.....

.....

.....

.....

.....

**CONS**

.....

.....

.....

.....

.....

.....

.....

.....

.....

.....

.....

.....

.....

.....

.....

.....

.....

.....

.....

.....

.....

**ADDITIONAL COMMENTS**

.....

.....

.....

.....

.....

.....

.....

.....

.....

.....

.....

.....

.....

.....

.....

.....

.....

.....

.....

.....

.....

.....

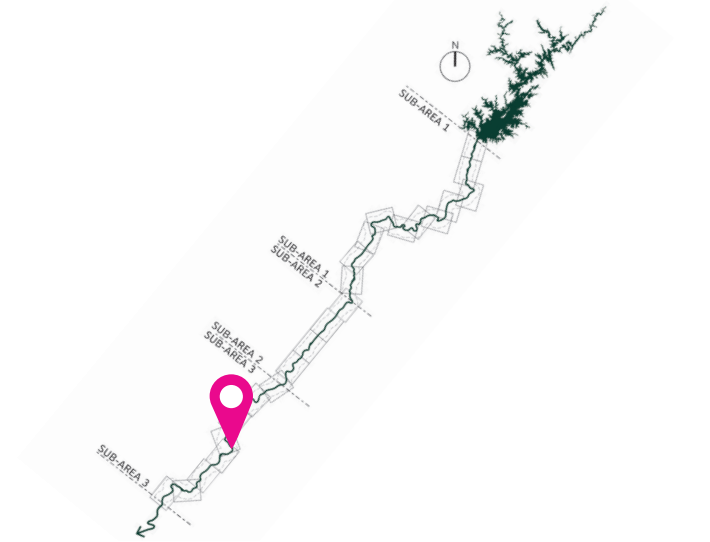
**DO YOU THINK THIS SITE SHOULD BE A DEMONSTRATION SITE?**

(mark one)

**Strongly Disagree**                   **Neutral**                   **Strongly Agree**

Name: ..... Organization: .....

# CHATTAHOOCHEE HILLS RIVERLANDS PARK



## SITE FACTS

Location: **Campelton road, Chattahoochee Hills, Fulton County**

Map tile: **L-118**

Sub-Area: **3**

Size: **260 acres**

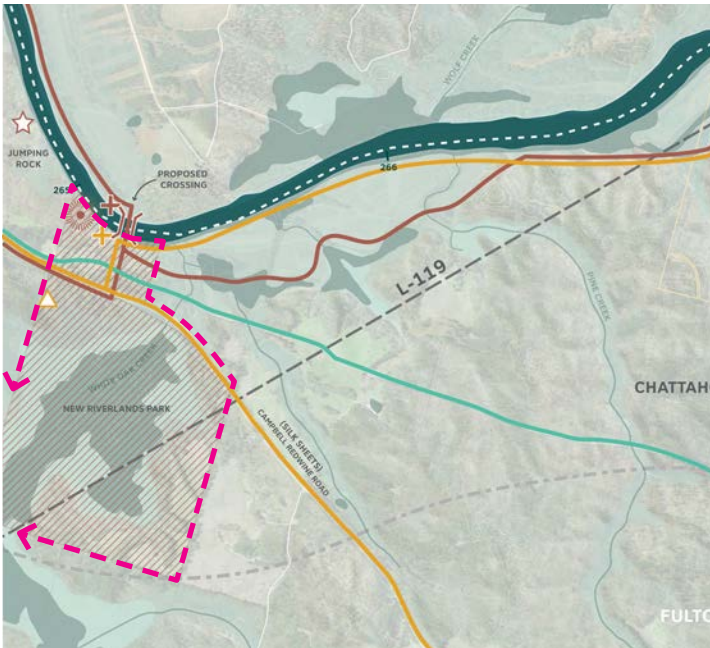
Ownership: **Trust for Public Land acquisition**

Description: **New large park with river access in Chattahoochee Hills.**

## SCORE CARD

Can this site fulfill the four design goals? Rate each goal on a scale of 1 to 5:

**1** = Not possible / **2** = Probably not possible / **3** = Maybe possible  
**4** = Most likely possible / **5** = Definitely possible!



## CAN THIS SITE ...

	Score	
<b>Safe, Connective Corridor</b>	accommodate multi-modal use? .....	<input type="text"/>
	connect to public transit? .....	<input type="text"/>
	include universal access to the River? .....	<input type="text"/>
	connect to existing regional trails? .....	<input type="text"/>
	safely connect communities to the River? .....	<input type="text"/>

<b>Ecological Refuge for the Region</b>	enhance ecological connectivity? .....	<input type="text"/>
	include tributary restoration? .....	<input type="text"/>
	include restoration potential? .....	<input type="text"/>
	intersect a MRPA category E or F zone? .....	<input type="text"/>
	balance access to an eco-sensitive area? .....	<input type="text"/>

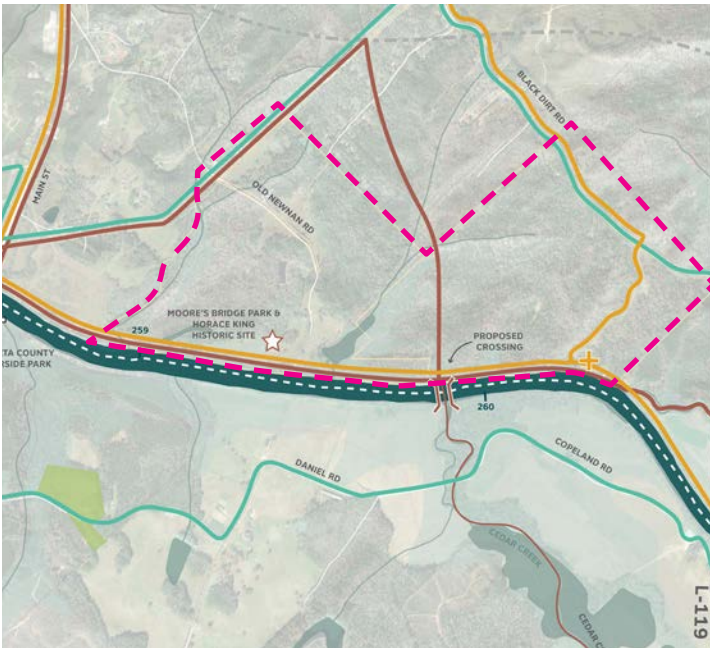
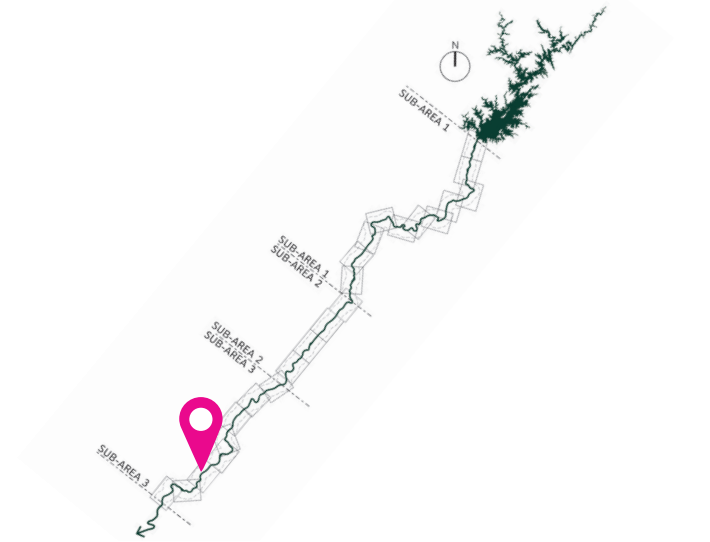
<b>Common Ground for All</b>	make new public space where it is lacking? ...	<input type="text"/>
	demonstrate anti-displacement strategies? ....	<input type="text"/>
	host stewardship/educational opportunities? ..	<input type="text"/>
	generate economic development/create jobs?	<input type="text"/>
	build on existing local grassroots efforts? ....	<input type="text"/>

<b>Living Legacy</b>	cross a significant historical site? .....	<input type="text"/>
	avoid sensitive historical resources? .....	<input type="text"/>
	connect to an area suitable for growth? .....	<input type="text"/>
	be implemented in the near future? .....	<input type="text"/>
	be a model for other sites? .....	<input type="text"/>





# MOORE'S BRIDGE PARK



## SITE FACTS

Location: **Whitesburg, Carroll County**

Map tile: **L-120**

Sub-Area: **3**

Size: **485 acres**

Ownership: **Carroll County**

Description: **Reveal and interpret historic bridge. Improve and enhance park and river access.**

## SCORE CARD

Can this site fulfill the four design goals? Rate each goal on a scale of 1 to 5:

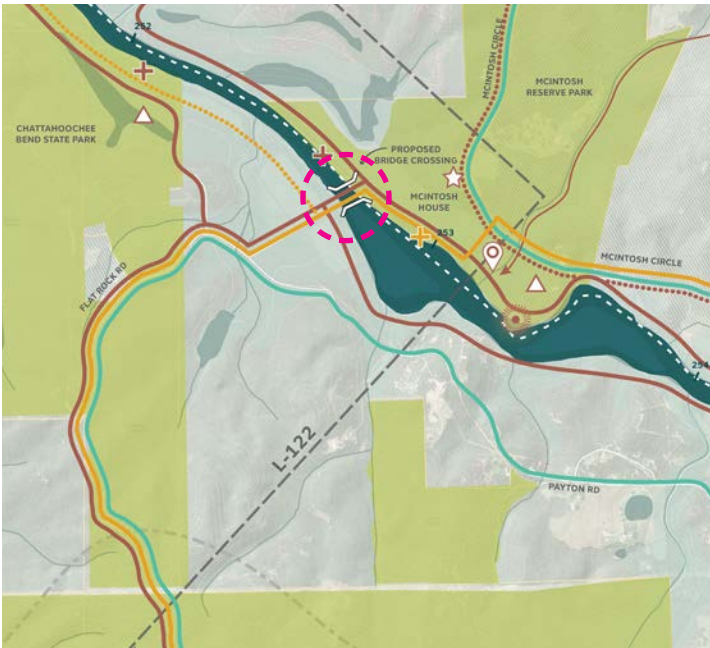
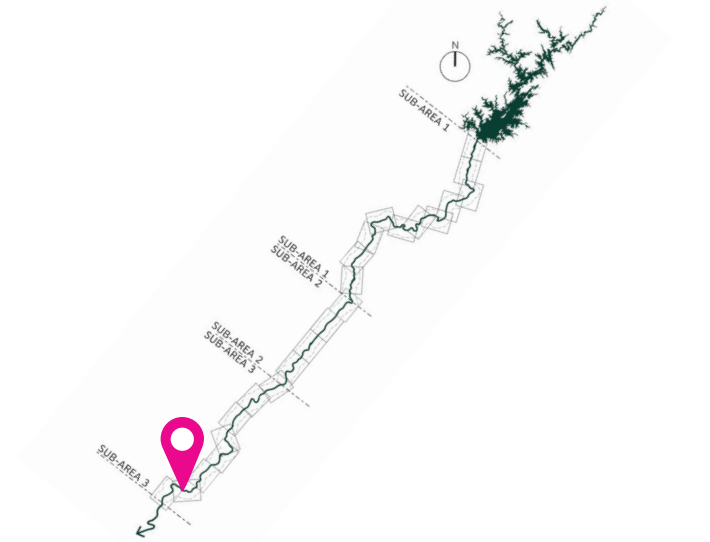
**1** = Not possible / **2** = Probably not possible / **3** = Maybe possible  
**4** = Most likely possible / **5** = Definitely possible!

## CAN THIS SITE ...

		Score
<b>Safe, Connective Corridor</b>	accommodate multi-modal use? .....	<input type="text"/>
	connect to public transit? .....	<input type="text"/>
	include universal access to the River? .....	<input type="text"/>
	connect to existing regional trails? .....	<input type="text"/>
	safely connect communities to the River? .....	<input type="text"/>
<b>Ecological Refuge for the Region</b>	enhance ecological connectivity? .....	<input type="text"/>
	include tributary restoration? .....	<input type="text"/>
	include restoration potential? .....	<input type="text"/>
	intersect a MRPA category E or F zone? .....	<input type="text"/>
<b>Common Ground for All</b>	balance access to an eco-sensitive area? .....	<input type="text"/>
	make new public space where it is lacking? ...	<input type="text"/>
	demonstrate anti-displacement strategies? ....	<input type="text"/>
	host stewardship/educational opportunities? ..	<input type="text"/>
	generate economic development/create jobs? ..	<input type="text"/>
<b>Living Legacy</b>	build on existing local grassroots efforts? ....	<input type="text"/>
	cross a significant historical site? .....	<input type="text"/>
	avoid sensitive historical resources? .....	<input type="text"/>
	connect to an area suitable for growth? .....	<input type="text"/>
	be implemented in the near future? .....	<input type="text"/>
	be a model for other sites? .....	<input type="text"/>



# McINTOSH CROSSING



## SITE FACTS

Location: **Between McIntosh Reserve Park and Chattahoochee Bend State Park, Coweta County & Carroll County**

Map tile: **L-121**

Sub-Area: **3**

Size: **N/A**

Ownership: **Carroll County, EHS Family Trust**

Description: **New bike and pedestrian crossing between McIntosh Reserve and Chattahoochee Bend State Park**

## SCORE CARD

Can this site fulfill the four design goals? Rate each goal on a scale of 1 to 5:

**1** = Not possible / **2** = Probably not possible / **3** = Maybe possible  
**4** = Most likely possible / **5** = Definitely possible!

### CAN THIS SITE ...

	Score	
<b>Safe, Connective Corridor</b>	accommodate multi-modal use? .....	<input type="text"/>
	connect to public transit? .....	<input type="text"/>
	include universal access to the River? .....	<input type="text"/>
	connect to existing regional trails? .....	<input type="text"/>
	safely connect communities to the River? .....	<input type="text"/>

<b>Ecological Refuge for the Region</b>	enhance ecological connectivity? .....	<input type="text"/>
	include tributary restoration? .....	<input type="text"/>
	include restoration potential? .....	<input type="text"/>
	intersect a MRPA category E or F zone? .....	<input type="text"/>
	balance access to an eco-sensitive area? .....	<input type="text"/>

<b>Common Ground for All</b>	make new public space where it is lacking? ...	<input type="text"/>
	demonstrate anti-displacement strategies? ....	<input type="text"/>
	host stewardship/educational opportunities? ..	<input type="text"/>
	generate economic development/create jobs?	<input type="text"/>
	build on existing local grassroots efforts? ....	<input type="text"/>

<b>Living Legacy</b>	cross a significant historical site? .....	<input type="text"/>
	avoid sensitive historical resources? .....	<input type="text"/>
	connect to an area suitable for growth? .....	<input type="text"/>
	be implemented in the near future? .....	<input type="text"/>
	be a model for other sites? .....	<input type="text"/>















The Chattahoochee River Greenway Study is being developed through collaborative input from stakeholders and community members.

For more information and to get involved:

**[WWW.CHATTAHOOCHEERIVERLANDS.COM](http://WWW.CHATTAHOOCHEERIVERLANDS.COM)**

