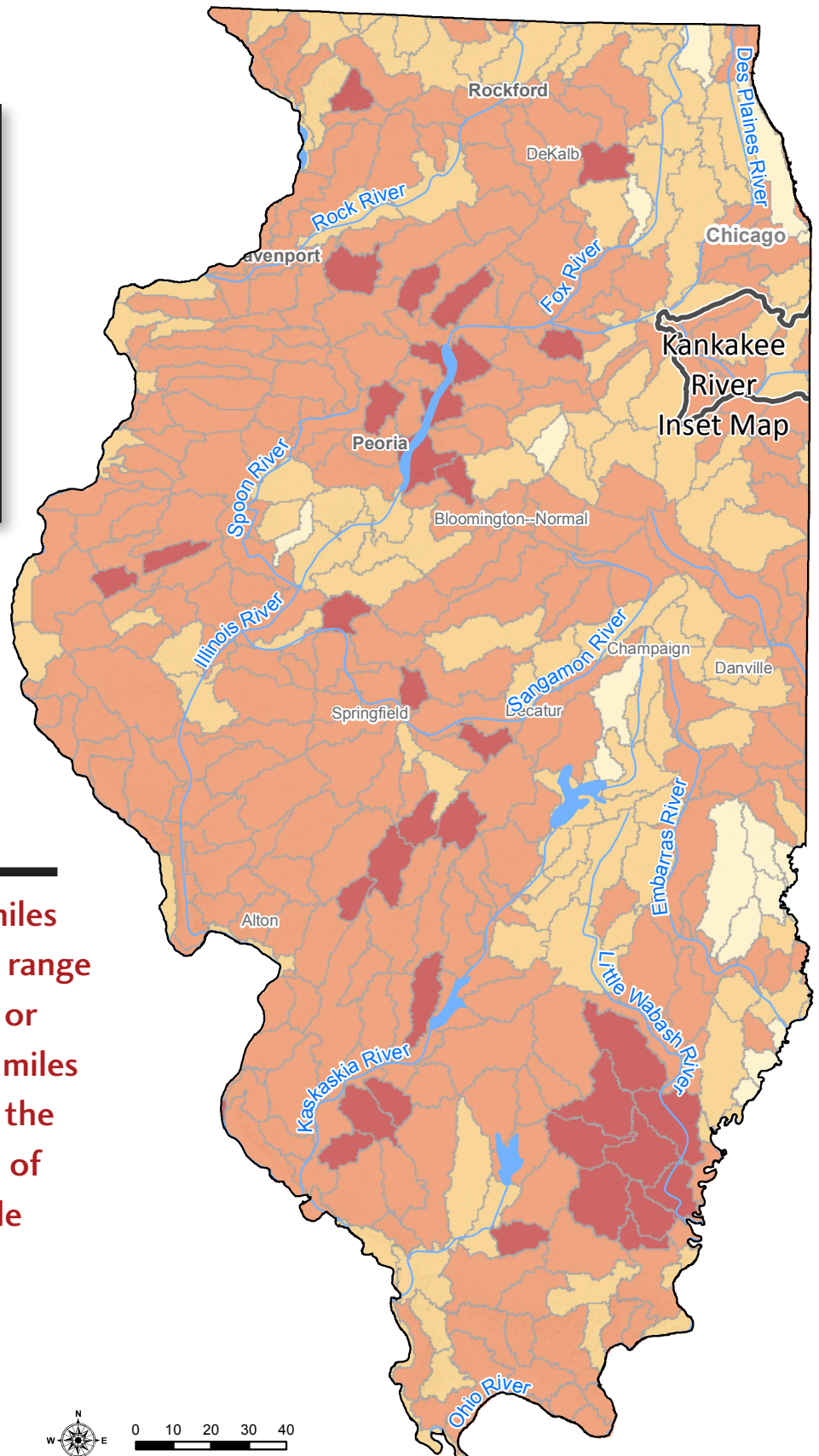
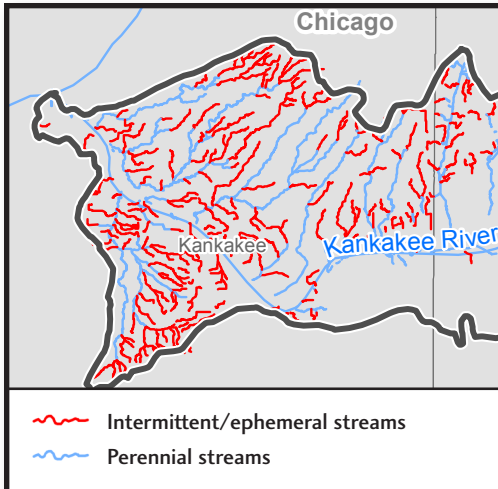




Waters of the United States: Illinois

% intermittent/ephemeral streams by watershed



In Illinois, **58%** of stream miles within native trout historical range are classified as intermittent or ephemeral. **61%** of stream miles are in headwater streams. In the Kankakee River basin, **55%** of streams are intermittent while **61%** are headwaters.

Source: USGS, National Hydrography Dataset Plus, 1:100,000.

