



# Waters of the United States: Maryland

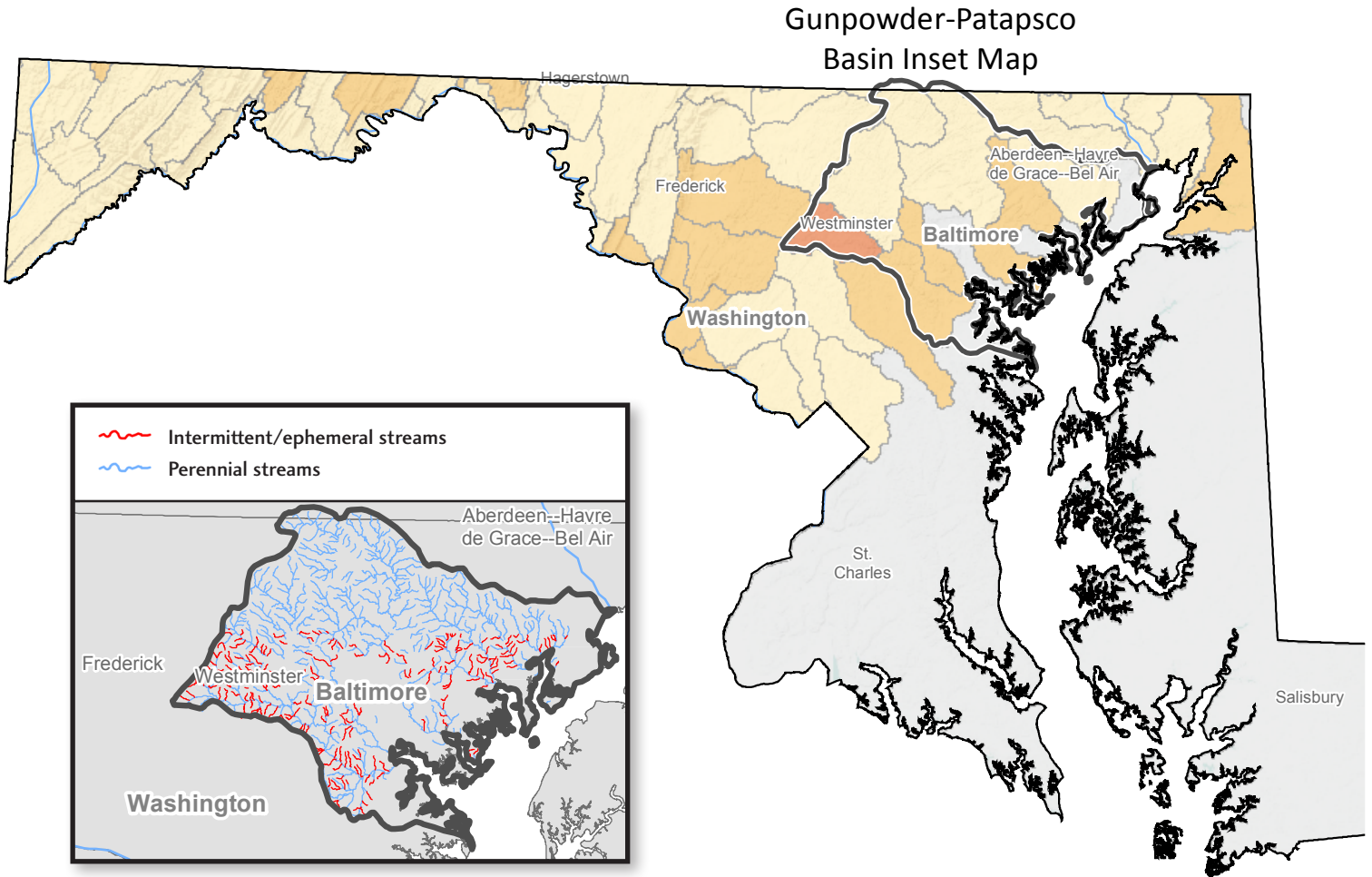
% intermittent/ephemeral streams by watershed

0% - 25%

25% - 50%

50% - 75%

75% - 100%



In Maryland, **18%** of stream miles within native trout historical range are classified as intermittent or ephemeral. **63%** of stream miles are in headwater streams. In the Gunpowder-Patapsco basin, **24%** of streams are intermittent while **65%** are headwaters.

Source: USGS, National Hydrography Dataset Plus, 1:100,000.

