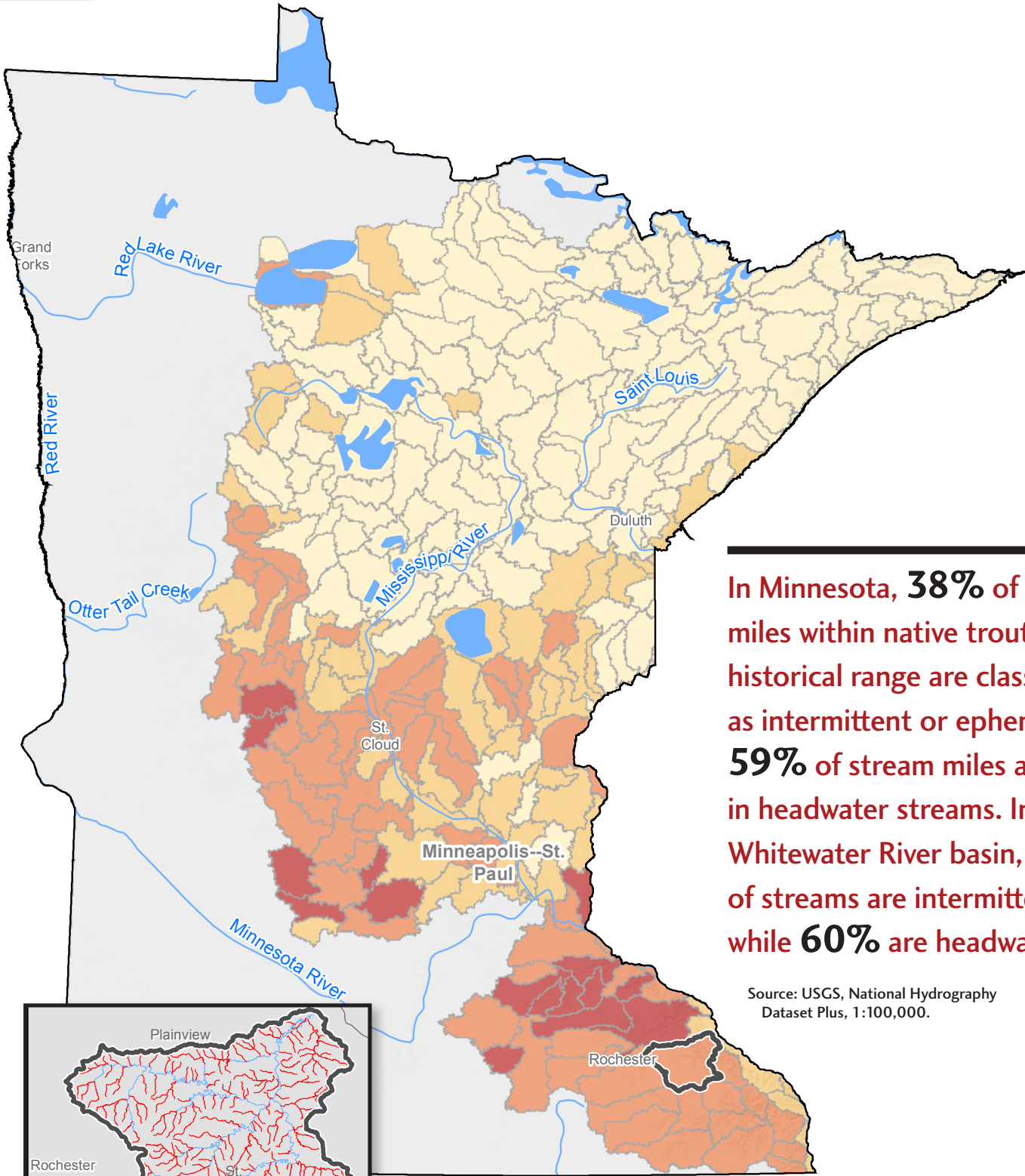




Waters of the United States: Minnesota

% intermittent/ephemeral streams by watershed

0% - 25% 25% - 50% 50% - 75% 75% - 100%



In Minnesota, **38%** of stream miles within native trout historical range are classified as intermittent or ephemeral. **59%** of stream miles are in headwater streams. In the Whitewater River basin, **74%** of streams are intermittent while **60%** are headwaters.

Source: USGS, National Hydrography Dataset Plus, 1:100,000.

