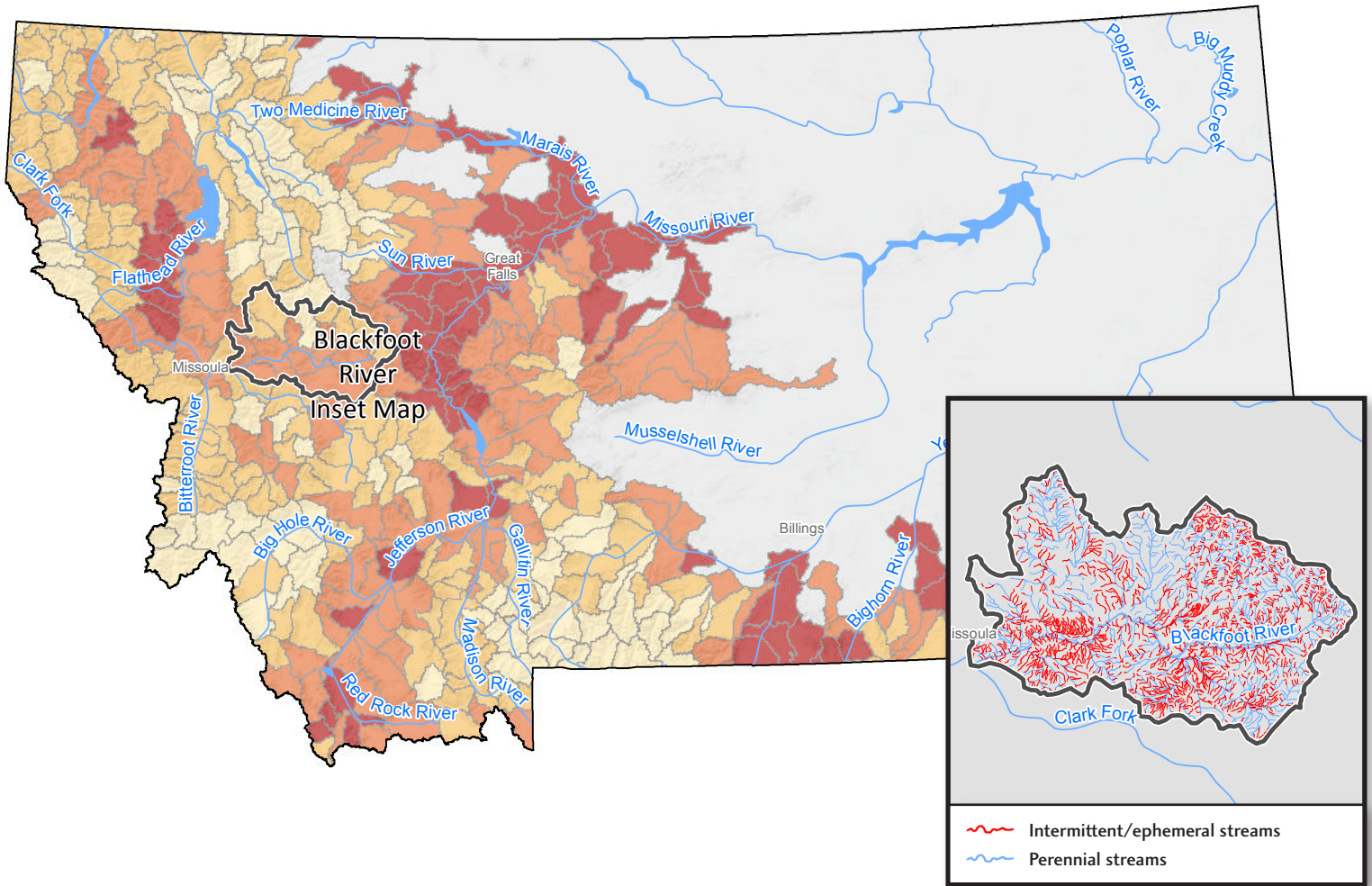




Waters of the United States: Montana

% intermittent/ephemeral streams by watershed



In Montana, **48%** of stream miles within native trout historical range are classified as intermittent or ephemeral. **59%** of stream miles are in headwater streams. In the Blackfoot River, **51%** of streams are intermittent while **60%** are headwaters.

Source: USGS, National Hydrography Dataset Plus, 1:100,000.

